

Steel Junction Box



Steel handy junction box



Part No.	Specification	Thickness
SF-58361-50	4 x 2 x 1-7/8", KO Sides (8) - 1/2" KO Bottom (3) - 1/2"	1.0mm 1.2mm 1.5mm 1.6mm



Part No.	Specification	Thickness
SF-58361-50COM	4 x 2 x 1-7/8", KO Sides (4) - 1/2", (4) - MKO KO Bottom (2) - 1/2", (1) - MKO	1.0mm 1.2mm 1.5mm 1.6mm



Part No.	Specification	Thickness
SF-58361P-75	4 x 2 x 1-7/8", KO Sides (6) - 3/4" KO Bottom (1) - 3/4" with raised ground emboss & 10/32 ground screw	1.0mm 1.2mm 1.5mm 1.6mm



Part No.	Specification	Thickness
SF-58361-75	4 x 2 x 1-7/8", KO Sides (4) - 1/2", (4) - MKO KO Bottom (2) - 1/2", (1) - MKO	1.0mm 1.2mm 1.5mm 1.6mm



Part No.	Specification	Thickness
SF-58361-VB-50COM	4 x 2 x 1-7/8", WITH MKO & FB BRACKET, KO Sides (2) - 1/2", (3) - MKO KO Bottom (2) - 1/2", (1) - MKO	1.0mm 1.2mm 1.5mm 1.6mm

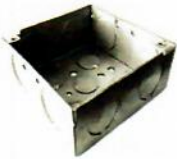
Steel Junction Box



Steel square junction box



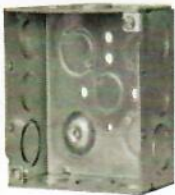
Part No.	Specification	Thickness
SF-52151P-5075	4 x 4 x 1-1/2", KO Sides: (8) - 1/2", (4) - 3/4"; KO Bottom: (2) - 1/2", (2) - 3/4" with Raised Ground Emboss	1.0mm 1.2mm 1.5mm 1.6mm



Part No.	Specification	Thickness
SF-52151-75	4 x 4 x 1-1/2". KO Sides: (8) - 3/4" KO Bottom: (3) - 1/2", (2) - 3/4"	1.0mm 1.2mm 1.5mm 1.6mm



Part No.	Specification	Thickness
SF-52151-50	4 x 4 x 1-1/2" KO Sides (12) - 1/2" KO Bottom (5) - 1/2"	1.0mm 1.2mm 1.5mm 1.6mm



Part No.	Specification	Thickness
SF-52171P-50COM	4 x 4 x 2-1/8" KO Sides: 8*1/2", 4*MKO; KO Bottom: 2*1/2", 2*MKO; with raised grounding screw	1.0mm 1.2mm 1.5mm 1.6mm



Part No.	Specification	Thickness
SF-52171P-100	4 x 4 x 2-1/8", KO side: 8*1" KO bottom: 2*1/2", 2*3/4", with raised grounding screw	1.0mm 1.2mm 1.5mm 1.6mm

Steel Junction Box



Steel octagonal junction box



Part No.	Specification	Thickness
SF-54151-50	4 x 4 x 1-1/2" Drawn Octagonal Steel box, KO Sides (4) - 1/2" KO Bottom (5) - 1/2"	1.0mm 1.2mm 1.5mm 1.6mm



Part No.	Specification	Thickness
SF-54151-75	4 x 4 x 1-1/2" Drawn Octagonal Steel box, KO Sides (4) - 3/4" KO Bottom (3) - 1/2", (2) - 3/4"	1.0mm 1.2mm 1.5mm 1.6mm



Part No.	Specification	Thickness
SF-54151-F	4 x 4 x 1-1/2", with FB Bracket for offset mounting on flat side of stud or joist KO Sides (3) - 1/2" KO Bottom (5) - 1/2"	1.0mm 1.2mm 1.5mm 1.6mm



Part No.	Specification	Thickness
SF-54151P-5075	4 x 4 x 1-1/2" Drawn Octagonal Steel box, Knockouts (2) - 1/2" & (2) - 3/4" KO Bottom (2) - 1/2" & (2) - 3/4" with Raised Ground Emboss & 10/32 Ground Screw	1.0mm 1.2mm 1.5mm 1.6mm



Part No.	Specification	Thickness
SF-54171-75	4 x 4 x 2-1/8" KO Sides (4) - 3/4" KO Bottom (3) - 1/2", (2) - 3/4"	1.0mm 1.2mm 1.5mm 1.6mm

Steel Junction Box



Steel square junction box



Part No.	Specification	Thickness
SF-52171P-75	4 x 4 x 2-1/8", KO side: 8*3/4" KO bottom: 2*1/2", 2*3/4", with raised groudng screw	1.0mm 1.2mm 1.5mm 1.6mm



Part No.	Specification	Thickness
SF-52151-FS	4 x 4 x 1-1/2", with FB Bracket for offset mounting on flat side KO Sides (6) - 1/2", (3) - MKO KO Bottom (3) - 1/2", (2) - MKO	1.0mm 1.2mm 1.5mm 1.6mm



Part No.	Specification	Thickness
SF-52171P-FS	4 x 4 x 2-1/8", with FB Bracket for offset mounting on flat side of stud or joist Bracket FB, KO Sides (6) - 1/2" 3-MKO KO Bottom (2) - 1/2", (2) -MKO with Raised Ground Emboss	1.0mm 1.2mm 1.5mm 1.6mm



Part No.	Specification	Thickness
SF-72171-K	Steel Square Outlet Box 4-11/ 16 x 2-1/8 Number of Knockouts: 22 Knockout Size: (4) 1/2 INCH, (2) 3/4 INCH CONCENTRIC KNOCKOUT BOTTOM, (10) 1/2 INCH, (6) 3/4 INCH CONCENTRIC KNOCKOUT SIDE	1.0mm 1.2mm 1.5mm 1.6mm

Steel Junction Box



Steel square junction box



Part No.	Specification	Thickness
SF-52171-KSSX	Steel Square Outlet Box 4 x 2-1/8 Number of Knockouts: 16 Knockout Size: (4) 1/2 INCH, (2) 3/4 INCH CONCENTRIC KNOCKOUT BOTTOM, (7) 1/2 INCH, (3) 3/4 INCH CONCENTRIC KNOCKOUT SIDE	1.0mm 1.2mm 1.5mm 1.6mm



Part No.	Specification	Thickness
SF-52151-75	4 x 4 x 1-1/2". KO Sides: (8) - 3/4" KO Bottom: (3) - 1/2", (2) - 3/4"	1.0mm 1.2mm 1.5mm 1.6mm



Part No.	Specification	Thickness
SF-52171P-50	4" Square Box, Welded, Metallic, 2-1/8" Deep Number: 16 (Bottom -4, Side -12) Size : 1/2 Inch Bottom, 1/2 Inch Sides	1.0mm 1.2mm 1.5mm 1.6mm



Part No.	Specification	Thickness
SF-52171P	Square Outlet Box, (2) 1/2", (2) 1/2", (1) 3/4" E, 4", Conduit (no clamps), Welded, 2-1/8", Steel, (8) 1/2", (4) 1/2", (1) 3/4" E, 30.3 cubic inch capacity Number of Knockouts- 16 Knockout Size: 1/2 in (Bottom); 3/4 in (Eccentric Bottom); 1/2 in (Side); 3/4 in (Eccentric Side)	1.0mm 1.2mm 1.5mm 1.6mm

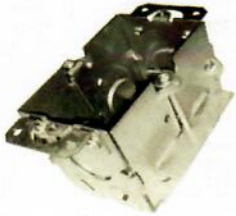


Part No.	Specification	Thickness
SF-52151P	Square Outlet Box, (2) 1/2", (2) 1/2", (1) 3/4" E, 4", Conduit (no clamps), Welded, 1-1/2", Steel, (8) 1/2", (4) 1/2", (1) 3/4" E, 22.0 cubic inch capacity Number of Knockouts- 16 Knockout Size - 1/2 in (Bottom) 1/2 - 3/4 in (Moon Knockout Bottom) 1/2 in (Side)	1.0mm 1.2mm 1.5mm 1.6mm

Steel Junction Box



Steel Multiple Gang Box



Part No.	Specification	Thickness
SF-1104-50	2 X 3 X 2-1/2" DEEP, GANGABLE 1-GANG OLD WORK TIGERGRIP BOX, KO Sides (4) - 1/2" KO Ends (2) - 1/2" KO Bottom (1) - 1/2"	1.0mm 1.2mm 1.5mm 1.6mm



Part No.	Specification	Thickness
SF-3104-LSSAX	Gangable, Steel, 2-1/2 in. Depth Number of Knockouts: 4	1.0mm 1.2mm 1.5mm 1.6mm



Steel extension ring



Part No.	Specification	Thickness
SF-53151-75	4 x 4 x 1-1/2" KO side: 8*3/4"	1.0mm 1.2mm 1.5mm 1.6mm

Knockout Seals

Type S Knockout Seals



Part No.	Size
SKS-050	1/2"
SKS-075	3/4"
SKS-100	1"
SKS-125	1-1/4"
SKS-150	1-1/2"
SKS-200	2"
SKS-250	2-1/2"
SKS-300	3"
SKS-350	3-1/2"
SKS-400	4"

Features:

Type S Knockout Seals With Screw & Bar - Set Screw/Bar Type Knockout Seals Are Inserted In Open Box Knockouts To Protect Exposed Wires.

Set Screw/Bar Type Knockout Seals Are Inserted In Open Box Knockouts To Protect Exposed Wires

Used In Standard, Air Tight Or Dust Tight Applications

Pre-Assembled Screw And Backer Bar Slides On Open Knockout Holes Without Removing Box Devices Or Covers

Steel Galvanized



Steel Knockout Seals

Part No.	Size
KOS-050	1/2"
KOS-075	3/4"
KOS-100	1"
KOS-125	1-1/4"
KOS-150	1-1/2"
KOS-200	2"

Use:

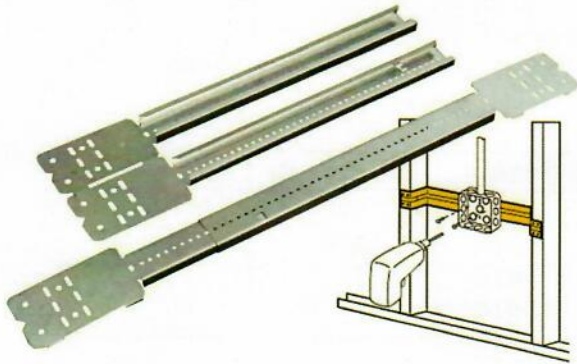
Knock-out seals are used to close exposed holes in an outlet box or metal enclosure.

Materials :

Steel

Mounting Brackets & Wall Supports

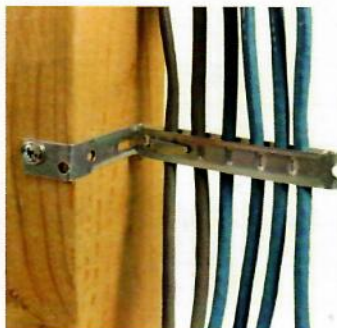
Adjustable Box Mounting Brackets



Product Features

- Can mount multiple boxes
- Notched and marked for easy identification and bending
- Improved design with stamped inch markings and pilot holes accelerates precise box conduit mounting between studs
- Pilot holes allow easy box attachment with a screwdriver
- Requires only a screw gun to install
- Can be mounted to face or inside of stud
- Adjustable for non-standard stud spacing
- Interlocking tab prevents accidental disassembly
- Unique, one-piece, break apart design
- Use with our U431-406 Wafer Head Self Drill Screws for attaching these brackets to a metal stud and the back boxes to the bracket

Part No.	Stud Spacing(cm)	Box Depth (Inch)	Quantity
SGB-16	28-45	1-1/2 - 2-1/8	50
SGB-24	43-66	1-1/2 - 2-1/8	50



Stud Wall Cable Supports

Material:

Galvanized steel

Size:

Cj6

Certificates:

UL standard

Use:

stud wall cable supports allow easy installation to secure NM or MC cables to wood or metal studs.

NM sheathed cable or up to 4 runs of MC and AC cables.

Reducing Washer



Use:

Reduce knockout size on sheet metal box, enclosure or cabinet

Materials :

Galvanized Steel

Finish :

Zinc Plated

Certification:

UL/CUL

Steel Reducing Washers

Part No.	Size
RWS-75/50	3/4"~1/2"
RWS-100/50	1"~1/2"
RWS-100/75	1"~3/4"
RWS-125/100	1-1/4"~1"
RWS-125/75	1-1/4"~1/2"
RWS-125/75	1-1/4"~3/4"
RWS-150/100	1-1/2"~1"
RWS-150/125	1-1/2"~1-1/4"
RWS-150/50	1-1/2"~1/2"
RWS-150/75	1-1/2"~3/4"
RWS-200/100	2"~1"
RWS-200/125	2"~1-1/4"
RWS-200/150	2"~2-1/2"
RWS-200/50	2"~1/2"
RWS-200/75	2"~3/4"
RWS-250/100	2-1/2"~1"
RWS-250/125	2-1/2"~1-1/4"
RWS-250/150	2-1/2"~1-1/2"
RWS-250/200	2-1/2"~2"
RWS-250/50	2-1/2"~1/2"
RWS-250/75	2-1/2"~3/4"
RWS-300/125	3"~1"
RWS-300/100	3"~1-1/4"
RWS-300/150	3"~1-1/2"
RWS-300/200	3"~2"
RWS-300/250	3"~2-1/2"
RWS-300/50	3"~1/2"
RWS-300/75	3"~3/4"
RWS-350/100	3-1/2"~1"
RWS-350/125	3-1/2"~1-1/4"
RWS-350/150	3-1/2"~1-1/2"
RWS-350/200	3-1/2"~2"
RWS-350/250	3-1/2"~2-1/2"
RWS-350/300	3-1/2"~3"
RWS-350/50	3-1/2"~1/2"
RWS-350/75	3-1/2"~3/4"
RWS-400/100	4"~1"
RWS-400/125	4"~1-1/4"
RWS-400/150	4"~1-1/2"
RWS-400/200	4"~2"
RWS-400/250	4"~2-1/2"
RWS-400/300	4"~3"
RWS-400/350	4"~3-1/2"
RWS-400/50	4"~1/2"
RWS-400/75	4"~3/4"

Conduit Nipple



Malleable Offset Conduit Nipple

Use :

Offset nipples are used to provide an offset connection between two outlet boxes or metal enclosures.

Materials : Malleable iron

Standards : UL 514B

Part No.	Size
MON-050	1/2"
MON-075	3/4"
MON-100	1"
MON-125	1-1/4"



Use:

Use to connect two steel outlet boxes or other metal enclosures or to extend a length of threaded Rigid or IMC conduit.

Materials : Zinc die cast

Standards : UL 514B

Zinc Conduit Chase Nipple

Part No	Size
ZCCN-050	1/2"
ZCCN-075	3/4"
ZCCN-100	1"
ZCCN-125	1-1/4"
ZCCN-150	1-1/2"
ZCCN-200	2"
ZCCN-250	2-1/2"
ZCCN-300	3"
ZCCN-350	3-1/2"
ZCCN-400	4"

Conduit Nipple



Malleable Offset Conduit Nipple

Use :

Offset nipples are used to provide an offset connection between two outlet boxes or metal enclosures.

Materials : Malleale iron

Standards :UL 514B

Part No.	Size
MON-050	1/2"
MON-075	3/4"
MON-100	1"
MON-125	1-1/4"



Zinc Conduit Chase Nipple

Use:

Use to connect two steel outlet boxes or other metal enclosures or to extend a length of threaded Rigid or IMC conduit.

Materials :Zinc die cast

Standards :UL 514B

Part No	Size
ZCCN-050	1/2"
ZCCN-075	3/4"
ZCCN-100	1"
ZCCN-125	1-1/4"
ZCCN-150	1-1/2"
ZCCN-200	2"
ZCCN-250	2-1/2"
ZCCN-300	3"
ZCCN-350	3-1/2"
ZCCN-400	4"

Grounding Pigtail



Grounding pigtails



Green insulated #14 AWG solid wire
 #10-32 x 3/8 green grounding screw on one end
 The other end contains a fork terminal
 Used to ground devices to steel boxes

Specification

Part No	Length	Wire AWG	Wire	Screw
S12-60	6 inch	#12	solid	#10-32 x 3/8
S12-65	6.5 inch	#12	solid	#10-32 x 3/8
S12-70	7 inch	#12	solid	#10-32 x 3/8
S12-75	7.5 inch	#12	solid	#10-32 x 3/8
S12-80	8 inch	#12	solid	#10-32 x 3/8
N12-70	7 inch	#12	stranded	#10-32 x 3/8
N12-75	7.5 inch	#12	stranded	#10-32 x 3/8
N12-80	8 inch	#12	stranded	#10-32 x 3/8
S14-60	6 inch	#14	solid	#10-32 x 3/8
S14-65	6.5 inch	#14	solid	#10-32 x 3/8
S14-70	7 inch	#14	solid	#10-32 x 3/8
S14-75	7.5 inch	#14	solid	#10-32 x 3/8
S14-80	8 inch	#14	solid	#10-32 x 3/8
N14-70	7 inch	#14	stranded	#10-32 x 3/8
N14-75	7.5 inch	#14	stranded	#10-32 x 3/8
N14-80	8 inch	#14	stranded	#10-32 x 3/8