



## **SUPERIOR ELECTRICAL PRODUCTS LLC**

ADD : 154 Cooper Road, Suite 402  
West Berlin, NJ 08091 USA

TEL : +1 (856) 262-8133

FAX : +1 (856) 262-8134

E-mail : [sales@superior-fittings.com](mailto:sales@superior-fittings.com)

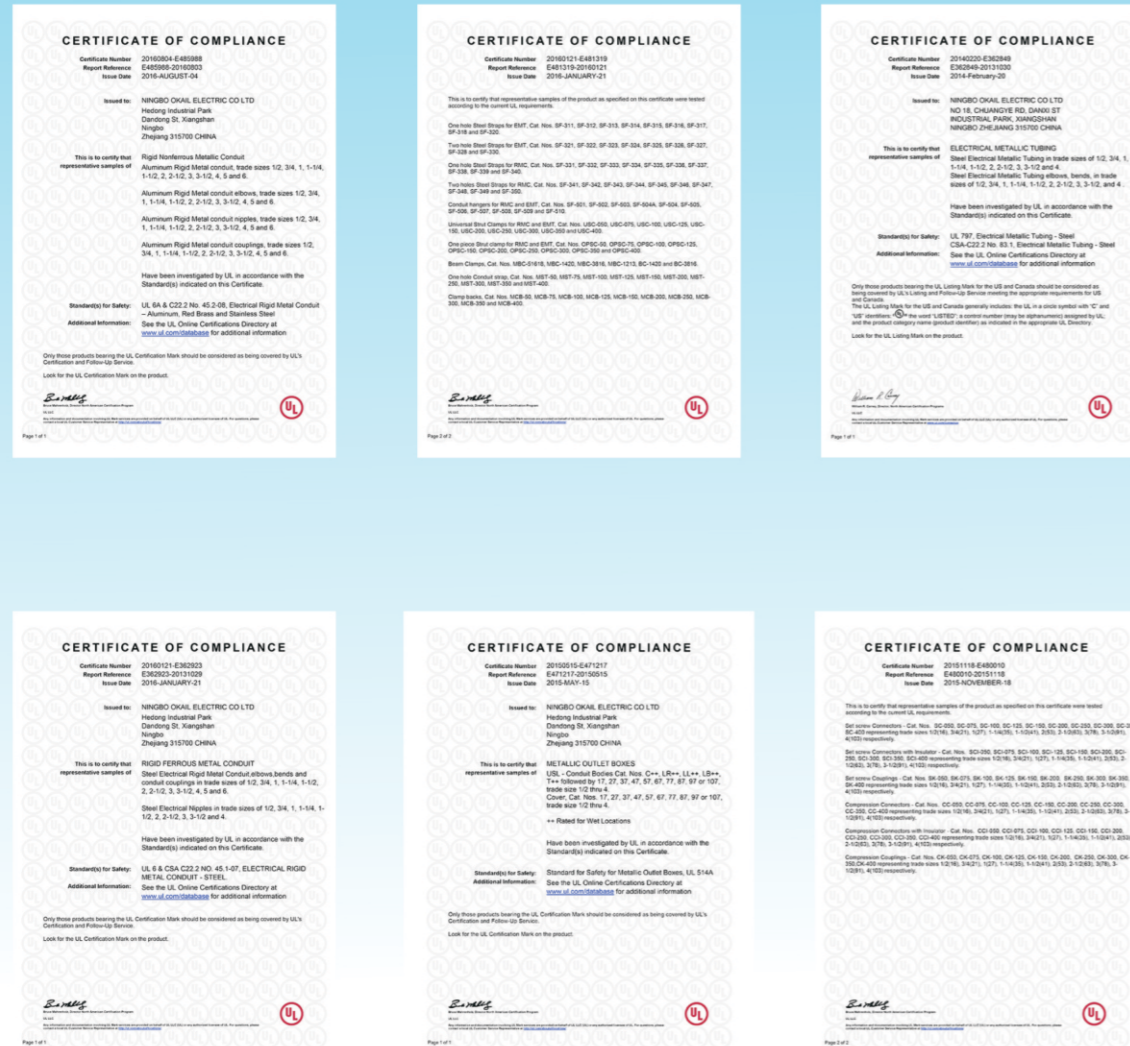
Web : [www.superior-fittings.com](http://www.superior-fittings.com)



**SUPERIOR ELECTRICAL PRODUCTS, LLC**



## UL Certification



<b>Conduit fittings</b>	
Zinc Die Cast Fittings.....	02
Steel and Malleable Iron Fittings.....	15
Plastic Fittings.....	23
<b>Conduit Body.....</b>	<b>33</b>
<b>Conduit Straps, Clamps, Hanger, Bracket, Wall Supports</b>	
EMT & Rigid Straps, Conduit Ferrule, Knockout Seals.....	37
Conduit Hanger, Swivel Hanger, Clevis Hanger.....	43
Mounting Brackets & Wall Cable Supports.....	45
Clamps, Perforated Straps, U-Bolts, Grounding Rod.....	46
Reducing Washer & Conduit Locknut.....	50
<b>Entrance Cap &amp; Conduit Bushing.....</b>	<b>55</b>
<b>Conduit Pipes</b>	
Steel Conduits (Rigid, IMC, EMT).....	59
Aluminum Conduits & BS Conduits.....	61
Steel Strut Channel, Threaded Rod & Nuts.....	62
<b>EMT CONDUITS.....</b>	<b>64</b>
<b>Flexible Conduits</b>	
PVC Non-Metallic Liquid Tight Conduit.....	66
PVC Coated Steel Flexible Conduits.....	67
Metal Clad Armor Cable MC(BX).....	69
Steel Flexible Conduits.....	70
PVC Coated Flexible Conduit with SS Wire Braided.....	72
<b>Conduit Elbows.....</b>	<b>73</b>
<b>Conduit Couplings &amp; Nipples.....</b>	<b>77</b>
<b>Conduit Whips &amp; Grounding Pigtails.....</b>	<b>83</b>
<b>Weatherproof Box &amp; AC Disconnect.....</b>	<b>86</b>
<b>Steel Junction Box.....</b>	<b>89</b>
<b>Steel Chains &amp; Conduit Accessories.....</b>	<b>95</b>
<b>GFCI &amp; USB Sockets.....</b>	<b>98</b>
<b>Lighting.....</b>	<b>104</b>







**Use:**  
Set screw type connectors are used to secure and terminate steel EMT conduit to knock-outs in concrete-tight box or dry location applications.

**Materials :**  
Zinc Die-Cast  
Aluminum die cast

**Standards :**  
UL 514B  
CSA C22.2 No. 18

**Certification:**  
UL/CUL

EMT Connector

Part No.	Part No.	Size
SCON-050	AEC-050	1/2"
SCON-075	AEC-075	3/4"
SCON-100	AEC-100	1"
SCON-125	AEC-125	1-1/4"
SCON-150	AEC-150	1-1/2"
SCON-200	AEC-200	2"
SCON-250	AEC-250	2-1/2"
SCON-300	AEC-300	3"
SCON-350	AEC-350	3-1/2"
SCON-400	AEC-400	4"



**Use:**  
Set screw type couplings are used to join lengths of steel EMT conduit for concrete-tight or dry location applications.

**Materials :**  
Zinc Die-Cast  
Aluminum die cast

**Standards :**  
UL 514B  
CSA C22.2 No. 18

**Certification:**  
UL/CUL

EMT Coupling

Part No.	Part No.	Size
SCOP-050	AECP-050	1/2"
SCOP-075	AECP-075	3/4"
SCOP-100	AECP-100	1"
SCOP-125	AECP-125	1-1/4"
SCOP-150	AECP-150	1-1/2"
SCOP-200	AECP-200	2"
SCOP-250	AECP-250	2-1/2"
SCOP-300	AECP-300	3"
SCOP-350	AECP-350	3-1/2"
SCOP-400	AECP-400	4"



**Use:**  
Compression type connectors are used to join two lengths of threadless Rigid or IMC Conduit.

**Materials :**  
Zinc

**Standards :**  
UL 514B  
CSA C22.2 No. 18

**Certification:**  
UL/CUL

EMT Compression Connector

Part No.	Size
CCON-050	1/2"
CCON-075	3/4"
CCON-100	1"
CCON-125	1-1/4"
CCON-150	1-1/2"
CCON-200	2"



**Use:**  
Compression type couplings are used to join two lengths of threadless Rigid or IMC Conduit.

**Materials :**  
Zinc

**Standards :**  
UL 514B  
CSA C22.2 No. 18

**Certification:**  
UL/CUL

EMT Compression Coupling

Part No.	Size
CCOP-050	1/2"
CCOP-075	3/4"
CCOP-100	1"
CCOP-125	1-1/4"
CCOP-150	1-1/2"
CCOP-200	2"





Liquid Tight Connectors (Straight)

Part No.	Part No.	Size
Insulated	Non-insulated	
ZLTC-038	ZLTC-038NI	3/8"
ZLTC-050	ZLTC-050NI	1/2"
ZLTC-075	ZLTC-075NI	3/4"
ZLTC-100	ZLTC-100NI	1"
ZLTC-125	ZLTC-125NI	1-1/4"
ZLTC-150	ZLTC-150NI	1-1/2"
ZLTC-200	ZLTC-200NI	2"
ZLTC-250	ZLTC-250NI	2-1/2"
ZLTC-300	ZLTC-300NI	3"
ZLTC-400	ZLTC-400NI	4"

**Use:**  
Straight liquid-tight connectors are used to terminate and seal Liquid-Tight Flexible Metal and Liquid-Tight Flexible Nonmetallic Type B Conduits to either an oil-tight, liquid-tight or rain-tight box or enclosure. Connectors can be used with tapered thread female entry or unthreaded knock-out using the provided sealing washer and locknut.

**Materials :**  
Zinc Die-Cast  
**Standards :**  
UL 514B  
CSA C22.2 No. 18  
**Certification:**  
UL/CUL

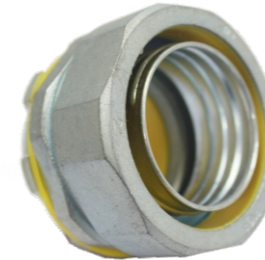


Liquid Tight Connectors (90 Degree)

Part No.	Part No.	Size
Insulated	Non-insulated	
ZLTC-9038	ZLTC-9038NI	3/8"
ZLTC-9050	ZLTC-9050NI	1/2"
ZLTC-9075	ZLTC-9075NI	3/4"
ZLTC-9100	ZLTC-9100NI	1"
ZLTC-9125	ZLTC-9125NI	1-1/4"
ZLTC-9150	ZLTC-9150NI	1-1/2"
ZLTC-9200	ZLTC-9200NI	2"
ZLTC-9250	ZLTC-9250NI	2-1/2"
ZLTC-9300	ZLTC-9300NI	3"
ZLTC-9400	ZLTC-9400NI	4"

**Use:**  
90° liquid-tight connectors are used to terminate and seal Liquid-Tight Flexible Metal and Liquidtight Flexible Nonmetallic Type B Conduits at 90 angles to either an oil-tight, liquid-tight or rain-tight box or enclosure. Connectors can be used with tapered thread female entry or unthreaded knock-out using the provided sealing washer and locknut. Furnished with Sealing Ring Suitable for Grounding

**Materials :**  
Zinc Die-Cast  
**Standards :**  
UL 514B  
CSA C22.2 No. 18  
**Certification:**  
UL/CUL



LT Connector--Straight

Part No.	Size
SLTC-050	1/2"
SLTC-075	3/4"
SLTC-100	1"
SLTC-125	1-1/4"
SLTC-150	1-1/2"
SLTC-200	2"
SLTC-250	2-1/2"
SLTC-300	3"
SLTC-400	4"

**Use:**  
Straight liquid-tight connectors are used to terminate and seal Liquid-Tight Flexible Metal and Liquid-Tight Flexible Nonmetallic Type B Conduits to either an oil-tight, liquid-tight or rain-tight box or enclosure. Connectors can be used with tapered thread female entry or unthreaded knock-out using the provided sealing washer and locknut.

**Materials :**  
Zinc Die-Cast  
**Standards :**  
UL 514B  
CSA C22.2 No. 18  
**Certification:**  
UL/CUL



LT Connector--90 Degree

Part No.	Size
SLTC-9050	1/2"
SLTC-9075	3/4"
SLTC-9100	1"
SLTC-9125	1-1/4"
SLTC-9150	1-1/2"
SLTC-9200	2"
SLTC-9250	2-1/2"
SLTC-9300	3"
SLTC-9400	4"

**Use:**  
90° liquid-tight connectors are used to terminate and seal Liquid-Tight Flexible Metal and Liquidtight Flexible Nonmetallic Type B Conduits at 90 angles to either an oil-tight, liquid-tight or rain-tight box or enclosure. Connectors can be used with tapered thread female entry or unthreaded knock-out using the provided sealing washer and locknut. Furnished with Sealing Ring Suitable for Grounding

**Materials :**  
Zinc Die-Cast  
**Standards :**  
UL 514B  
CSA C22.2 No. 18  
**Certification:**  
UL/CUL







Saddle Combination Connector

Part No.	Size
SDC-038	3/8"

**Use:**  
Saddle combination connector are used to terminate armored and metal clad cables to a 1/2" knock-out in a dry location box or enclosure.

**Materials :**  
Zinc Die-Cast  
**Standards :**  
UL 514B  
CSA C22.2 No. 18  
**Certification:**  
UL/CUL



Duplex Connector

Part No.	Size
MCD-038	3/8"

**Use:**  
Duplex connectors are used to terminate two runs of Armored Cable, Metal Clad Cable or Flexible metal Conduit to a 1/2" knock-out in a dry location.

**Materials :**  
Zinc Die-Cast  
**Standards :**  
UL 514B  
CSA C22.2 No. 18  
**Certification:**  
UL/CUL



One screw Duplex Connector

Part No.	Size
ODC-38	3/8"

**Use:**  
Flex-MC connectors are used to terminate two runs of Armored Cable, Metal Clad Cable or Flexible metal Conduit to a 1/2" knock-out in a dry location.

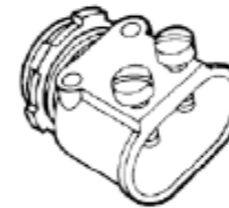
**Materials :**  
Zinc Die-Cast  
**Standards :**  
UL 514B  
CSA C22.2 No. 18  
**Certification:**  
UL/CUL



**Use:**  
Clamp type Duplex connectors are used to terminate two runs of Armored Cable, Metal Clad Cable or Flexible metal Conduit to a 1/2" knock-out in a dry location.  
**Materials :**Zinc Die-Cast  
**Standards :**UL 514B  
CSA C22.2 No. 18  
**Certification:**UL/CUL

Clamp Duplex Connector

Part No.	Size
CDC-38	3/8"



**Use:**  
Clamp type Duplex connectors are used to terminate two runs of Armored Cable, Metal Clad Cable or Flexible metal Conduit to a 1/2" knock-out in a dry location.  
**Materials :**Zinc Die-Cast  
**Standards :**UL 514B  
CSA C22.2 No. 18  
**Certification:**UL/CUL

Two screw Duplex Connector

Part No.	Size
TDC-38	3/8"



**Use:**  
Duplex connectors are used to terminate two runs of armored cable, metal clad cable or flexible metal Conduit to a 1/2" knock-out in a dry location.  
**Materials :**Zinc Die-Cast  
**Standards :**UL 514B  
CSA C22.2 No. 18  
**Certification:**UL/CUL

Single BX Connector

Part No.	Size
BXC-038	3/8"



**Use:**  
Combination couplings are used to provide a transition from steel EMT conduit to Flexible Metal Conduit.  
Set Screw Type  
**Materials :**Zinc Die-Cast  
**Standards :**UL 514B  
CSA C22.2 No. 18  
**Certification:**UL/CUL

Combination Couplings (EMT to flexible conduit)

Part No.	Size
CMB-050	1/2"
CMB-075	3/4"
CMB-100	1"





**Materials:**  
Zinc die cast  
**Standards :**  
UL 514B

Box Spacer

Part No.	Size
ZBC-50	1/2"
ZBC-75	3/4"



**Materials:**  
Zinc Die-Cast  
**Standards :**  
UL

Saddle Cable Connector

Part No.	Size
RXCC-038	3/8"



**Use:**  
Clamp type connectors are used to terminate Metal Clad Cable or Flexible Metal Conduit to a 1/2" knock-out in a dry box or enclosure.  
UL Listed Locknut  
Male Hub Threads NPS  
End Stopped  
**Standards:**  
UL 514B  
CSA C22.2 No. 18  
**Certification:**  
UL/CUL

Romex Clamp Connector

Part No.	Size
RCON-038	3/8"
RCON-050	1/2"
RCON-075	3/4"
RCON-100	1"
RCON-125	1-1/4"
RCON-150	1-1/2"
RCON-200	2"



**Use:**  
used to terminate Flexible Metal Conduit to a knock-out in a dry location box or enclosure.  
**Materials :**  
Zinc Die-Cast  
**Standards :**  
UL 514B  
CSA C22.2 No. 18

Squeeze Connectors-straight

Part No.	Size
SSQ-038	3/8"
SSQ-050	1/2"
SSQ-075	3/4"
SSQ-100	1"
SSQ-125	1-1/4"
SSQ-150	1-1/2"
SSQ-200	2"
SSQ-250	2-1/2"
SSQ-300	3"
SSQ-400	4"



**Use:**  
Used to make a 90° termination of Armored Cable, Metal Clad Cable or Flexible, Metal Conduit to a knock-out or unthreaded slip hole in a dry location box or enclosure.  
**Materials :**Zinc Die-Cast  
**Standards :**UL 514B  
CSA C22.2 No. 18

Squeeze Connector-90 Deg

Part No.	Size
ASQ-038	3/8"
ASQ-050	1/2"
ASQ-075	3/4"
ASQ-100	1"
ASQ-125	1-1/4"
ASQ-150	1-1/2"
ASQ-200	2"
ASQ-250	2-1/2"
ASQ-300	3"
ASQ-400	4"



**Materials :**  
Zinc Die-Cast  
**Standards :**  
UL 514B  
CSA C22.2 No. 18

EMT to flex coupling

Part No.	Size
EFC-050	1/2"



**Materials :**  
Zinc Die-Cast  
**Standards :**  
UL 514B  
CSA C22.2 No. 18

Strap Connector

Part No.	Size
SP-050	1/2"



**Materials :**  
Zinc Die-Cast  
**Standards :**  
UL 514B  
CSA C22.2 No. 18

BX Flex Connector

Part No.	Size
BFC-050	1/2"



**Use:**  
Screw-in type connectors are used to terminate Flexible Metal Conduit to a knock-out in a dry location box or enclosure, where minimum spacing is desired between the conduits.  
**Materials:**Zinc Die-Cast  
**Standards :**UL 514B  
CSA C22.2 No. 18  
**Certification:**UL/CUL

Flex Connector

Part No.	Size
ZFC-050	1/2"
ZFC-075	3/4"
ZFC-100	1"
ZFC-125	1-1/4"
ZFC-150	1-1/2"
ZFC-200	2"



**Use:**  
Screw-in type couplings are used to join lengths of Flexible Metal Conduit.  
**Materials:**Zinc Die-Cast  
**Standards :**UL 514B  
CSA C22.2 No. 18  
**Certification:**UL/CUL

Screw In Coupling

Part No.	Size
FSC-050A	1/2"
FSC-075A	3/4"
FSC-100A	1"
FSC-125A	1-1/4"
FSC-150A	1-1/2"
FSC-200A	2"



**Use:**  
Combination couplings are used to join lengths of Flexible Metal Conduit.  
**Materials:**Zinc Die-Cast  
**Standards :**UL 514B  
CSA C22.2 No. 18  
**Certification:**UL/CUL

EMT To Flex Combination Coupling

Part No.	Size
EFCP-50	1/2"
EFCP-75	3/4"
EFCP-100	1"



Watertight Hub

Part No.	Size
ZWH-050	1/2"
ZWH-075	3/4"
ZWH-100	1"
ZWH-125	1-1/4"
ZWH-150	1-1/2"
ZWH-200	2"
ZWH-250	2-1/2"
ZWH-300	3"
ZWH-400	4"



Watertight Grounding Hub

Part No.	Size
ZGH-050	1/2"
ZGH-075	3/4"
ZGH-100	1"
ZGH-125	1-1/4"
ZGH-150	1-1/2"
ZGH-200	2"
ZGH-250	2-1/2"
ZGH-300	3"
ZGH-400	4"

**Use:**  
Watertight hubs are used to terminate threaded conduit to an outlet box or metal enclosure where a rain-tight, oil-tight or dust-tight connection is required.  
Assembled with 150 degree Rated Insulator and BUNA-N Oversized Locknut Provides Vibration-Proof Installation and Positive Grounding  
Listed for Use in Wet Locations  
**Materials :**Zinc Die-Cast  
**Standards :**UL 514B  
CSA C22.2 No. 18  
**Certification:**UL/CUL



## Zinc Die Cast Fittings



**Materials:**  
Zinc Die-Cast  
**Standards :**  
UL

Rigid to Rigid Pull Elbow

Part No.	Size
ZRR-50	1/2"
ZRR-75	3/4"
ZRR-100	1"
ZRR-125	1-1/4"
ZRR-150	1-1/2"
ZRR-200	2"



**Materials:**  
Zinc Die-Cast  
**Standards :**  
UL

Rigid to Box Pull Elbow

Part No.	Size
ZRB-50	1/2"
ZRB-75	3/4"
ZRB-100	1"
ZRB-125	1-1/4"
ZRB-150	1-1/2"
ZRB-200	2"



**Materials:**  
Zinc Die-Cast  
**Standards :**  
UL

EMT to EMT Pull Elbow

Part No.	Size
EPE-050	1/2"
EPE-075	3/4"
EPE-100	1"
EPE-125	1-1/4"
EPE-150	1-1/2"
EPE-200	2"



**Materials:**  
Zinc Die-Cast  
**Standards :**  
UL

EMT to Box Pull Elbow

Part No.	Size
EPB-050	1/2"
EPB-075	3/4"
EPB-100	1"
EPB-125	1-1/4"
EPB-150	1-1/2"
EPB-200	2"

EMT to Pull Elbow  
EMT To RMC Combination

Part No.	Size
EPR-050	1/2"
EPR-075	3/4"
EPR-100	1"
EPR-125	1-1/4"
EPR-150	1-1/2"
EPR-200	2"



**Materials:**  
Zinc Die-Cast  
**Standards :**  
UL

## Zinc Die Cast Fittings



**Materials:**  
Zinc Die-Cast  
**Standards :**  
UL

Offset Connector

Part No.	Size
OFC-050	1/2"
OFC-075	3/4"
OFC-100	1"
OFC-125	1-1/4"
OFC-150	1-1/2"
OFC-200	2"



**Materials:**  
Zinc Die-Cast  
**Standards :**  
UL

EMT to Box offset connector

Part No.	Size
EBOC-50	1/2"
EBOC-75	3/4"
EBOC-100	1"



**Materials:**  
Zinc Die-Cast  
**Standards :**  
UL

EMT to Box  
Compression Connector

Part No.	Size
EX-50	1/2"
EX-75	3/4"
EX-100	1"



Inside Corner Pull Elbows

Part No.	Size
EBC-50	1/2"
EBC-75	3/4"

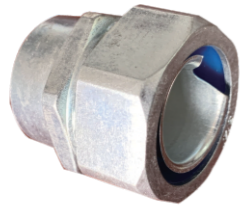
**Use:**

Pull elbows are used to facilitate pulling conductors through a 90° bend in a run of steel RIGID / EMT Conduit. The removable cover gives ample access so that wire pulling can be achieved without any obstruction.

- Set Screw Type
- Removable Aluminum Cover

**Materials:**Zinc Die-Cast  
**Standards :**UL 514B  
CSA C22.2 No. 18  
**Certification:**UL/CUL

## Zinc Die Cast Fittings



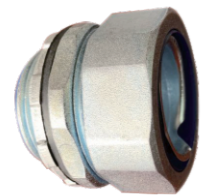
**Use:**

Used to terminate Flexible Metal Conduit to a knock-out in a dry location box or enclosure.

**Material:**Zinc Die Cast

**Standards :**UL 514B  
CSA C22.2 No. 18

**Certification:**UL/CUL



**Use:**

Used to terminate Flexible Metal Conduit to a knock-out in a dry location box or enclosure.

**Material:**Zinc Die Cast

**Standards :**UL 514B  
CSA C22.2 No. 18

**Certification:**UL/CUL



**Use:**

Used to terminate Flexible Metal Conduit to a knock-out in a dry location box or enclosure.

**Material:**Zinc Die Cast

**Standards :**UL 514B  
CSA C22.2 No. 18

**Certification:**UL/CUL

### Inner Tooth Pipe Connector

Part No.	Size
NPN-38	3/8"
NPN-50	1/2"
NPN-75	3/4"
NPN-100	1"
NPN-125	1-1/4"
NPN-150	1-1/2"
NPN-200	2"
NPN-250	2-1/2"
NPN-300	3"
NPN-350	3-1/2"
NPN-400	4"

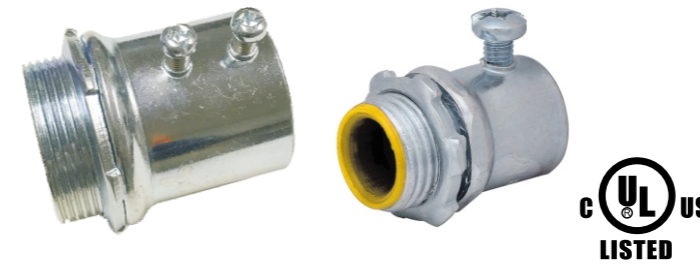
### Waterproof Box Connector

Part No.	Size
DPJ-38	3/8"
DPJ-50	1/2"
DPJ-75	3/4"
DPJ-100	1"
DPJ-125	1-1/4"
DPJ-150	1-1/2"
DPJ-200	2"
DPJ-250	2-1/2"
DPJ-300	3"
DPJ-350	3-1/2"
DPJ-400	4"

### Zinc Bent of Head (90 degree & 45 degree)

Part No.	Size	Part No.	Size
DWJ90-38	3/8"	DWJ45-38	3/8"
DWJ90-50	1/2"	DWJ45-50	1/2"
DWJ90-75	3/4"	DWJ45-75	3/4"
DWJ90-100	1"	DWJ45-100	1"
DWJ90-125	1-1/4"	DWJ45-125	1-1/4"
DWJ90-150	1-1/2"	DWJ45-150	1-1/2"
DWJ90-200	2"	DWJ45-200	2"
DWJ90-250	2-1/2"	DWJ45-250	2-1/2"
DWJ90-300	3"	DWJ45-300	3"
DWJ90-350	3-1/2"	DWJ45-350	3-1/2"
DWJ90-400	4"	DWJ45-400	4"

## Steel Fittings



**Use:**

Set screw type connectors are used to secure and terminate steel EMT conduit to knock-outs in concrete-tight box or dry location applications.  
UL Listed Locknut  
Concrete-Tight

**Materials :**

Steel

**Standards :**

UL 514B  
CSA C22.2 No. 18

**Certification:**

UL/CUL



**Use:**

Compression type couplings are used to join two EMT conduits  
Concrete-Tight

**Materials :**

Steel

**Standards :**

UL 514B  
CSA C22.2 No. 18

**Certification:**

UL/CUL

### EMT Set Screw Connector

Part No.	Size
SSC-050	1/2"
SSC-075	3/4"
SSC-100	1"
SSC-125	1-1/4"
SSC-150	1-1/2"
SSC-200	2"
SSC-250	2-1/2"
SSC-300	3"
SSC-350	3-1/2"
SSC-400	4"

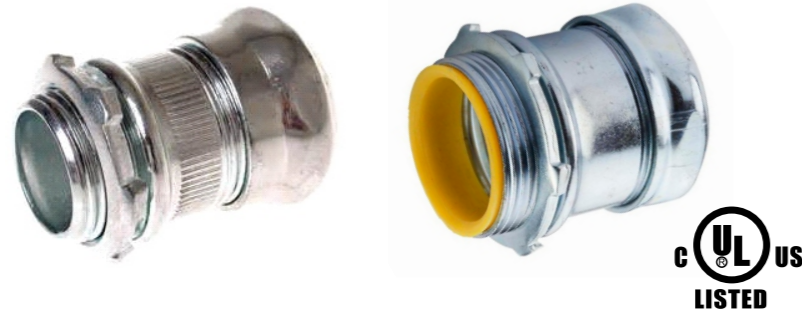
### EMT Insulated Set Screw Connector

Part No.	Size
SSCI-050	1/2"
SSCI-075	3/4"
SSCI-100	1"
SSCI-125	1-1/4"
SSCI-150	1-1/2"
SSCI-200	2"
SSCI-250	2-1/2"
SSCI-300	3"
SSCI-350	3-1/2"
SSCI-400	4"

### EMT Set Screw Coupling

Part No.	Size
SSCP-050	1/2"
SSCP-075	3/4"
SSCP-100	1"
SSCP-125	1-1/4"
SSCP-150	1-1/2"
SSCP-200	2"
SSCP-250	2-1/2"
SSCP-300	3"
SSCP-350	3-1/2"
SSCP-400	4"





EMT Compression Connector

Part No.	Size
SCC-050	1/2"
SCC-075	3/4"
SCC-100	1"
SCC-125	1-1/4"
SCC-150	1-1/2"
SCC-200	2"
SCC-250	2-1/2"
SCC-300	3"
SCC-350	3-1/2"
SCC-400	4"

**Use:**  
Compression type connectors are used to join two lengths of threadless Rigid or IMC Conduit. Concrete-Tight

**Materials :**  
Steel  
**Standards :**  
UL 514B  
CSA C22.2 No. 18  
**Certification:**  
UL/CUL

EMT Insulated Compression Connector

Part No.	Size
SCCI-050	1/2"
SCCI-075	3/4"
SCCI-100	1"
SCCI-125	1-1/4"
SCCI-150	1-1/2"
SCCI-200	2"
SCCI-250	2-1/2"
SCCI-300	3"
SCCI-350	3-1/2"
SCCI-400	4"



**Use:**  
Compression type couplings are used to join two lengths of threadless Rigid or IMC Conduit. Concrete-Tight

**Materials :**  
Steel  
**Standards :**  
UL 514B  
CSA C22.2 No. 18  
**Certification:**  
UL/CUL

EMT Compression Coupling

Part No.	Size
SCCP-050	1/2"
SCCP-075	3/4"
SCCP-100	1"
SCCP-125	1-1/4"
SCCP-150	1-1/2"
SCCP-200	2"
SCCP-250	2-1/2"
SCCP-300	3"
SCCP-350	3-1/2"
SCCP-400	4"



Rain Tight Compression Connector

Part No.	Size
RTCC-050	1/2"
RTCC-075	3/4"
RTCC-100	1"
RTCC-125	1-1/4"
RTCC-150	1-1/2"
RTCC-200	2"
RTCC-250	2-1/2"
RTCC-300	3"
RTCC-350	3-1/2"
RTCC-400	4"

**Use:**  
Compression type connectors are used to secure and terminate steel EMT conduit to knock-outs in concrete-tight box, dry or damp location applications. used on steel EMT Conduits

**Materials :**  
Steel  
**Standards :**  
UL 514B  
CSA C22.2 No. 18  
**Certification:**  
UL/CUL

Rain Tight Compression Coupling

Part No.	Size
RTCP-050	1/2"
RTCP-075	3/4"
RTCP-100	1"
RTCP-125	1-1/4"
RTCP-150	1-1/2"
RTCP-200	2"
RTCP-250	2-1/2"
RTCP-300	3"
RTCP-350	3-1/2"
RTCP-400	4"

**Use:**  
Compression type couplings are used to join lengths of steel EMT conduit for concrete-tight, dry or damp location applications. use on steel EMT Conduits. Concrete-Tight

**Materials :**  
Steel  
**Standards :**  
UL 514B  
CSA C22.2 No. 18  
**Certification:**  
UL/CUL



Steel Rigid Connector

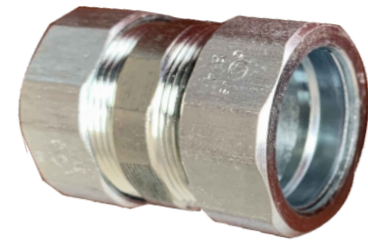
Part No.	Size
SCCON-050	1/2"
SCCON-075	3/4"
SCCON-100	1"
SCCON-125	1-1/4"
SCCON-150	1-1/2"
SCCON-200	2"
SCCON-250	2-1/2"
SCCON-300	3"
SCCON-350	3-1/2"
SCCON-400	4"

**Use:**  
 Compression type connectors are used to join two lengths of threadless Rigid or IMC Conduit. Concrete-Tight

**Materials :**  
 Steel

**Standards :**  
 UL 514B  
 CSA C22.2 No. 18

**Certification:**  
 UL/CUL



Steel Rigid Coupling

Part No.	Size
SCCOP-050	1/2"
SCCOP-075	3/4"
SCCOP-100	1"
SCCOP-125	1-1/4"
SCCOP-150	1-1/2"
SCCOP-200	2"
SCCOP-250	2-1/2"
SCCOP-300	3"
SCCOP-350	3-1/2"
SCCOP-400	4"

**Use:**  
 Compression type couplings are used to join two lengths of threadless Rigid or IMC Conduit. Concrete-Tight

**Materials :**  
 Steel

**Standards :**  
 UL 514B  
 CSA C22.2 No. 18

**Certification:**  
 UL/CUL



Rigid set-screw connectors--Steel

Part No.	Size
SRC-050	1/2"
SRC-075	3/4"
SRC-100	1"
SRC-125	1-1/4"
SRC-150	1-1/2"
SRC-200	2"

**Use:**  
 Steel Rigid set-screw connectors are used in dry locations to bond unthreaded rigid or IMC conduits to electrical junction boxes or electrical enclosures. The steel construction ensures mechanical protection to the conduit and designated electrical junction box or enclosure. These connectors eliminate the need to thread bald conduits to connect them to boxes or enclosures. In damp locations, set-screw connectors are also of excellent corrosion protection with zinc electroplated.



Rigid set-screw couplings--Steel

Part No.	Size
SRCP-050	1/2"
SRCP-075	3/4"
SRCP-100	1"
SRCP-125	1-1/4"
SRCP-150	1-1/2"
SRCP-200	2"

**Use:**  
 Steel Rigid set-screw couplings are used in dry locations to bond unthreaded rigid or IMC conduits to electrical junction boxes or electrical enclosures. The steel construction ensures mechanical protection to the conduit and designated electrical junction box or enclosure. These connectors eliminate the need to thread bald conduits to connect them to boxes or enclosures. In damp locations, set-screw connectors are also of excellent corrosion protection with zinc electroplated.



## Steel Fittings



### Bx-flex, NM and MC cable connectors

Part No.	Size
CBC-50	1/2"
CBC-52	1/2"duplex
CBC-75	3/4"

**Use:**  
CBC-50 and CBC-52:  
3/8" trade size steel and aluminum RW Flexible Metal Conduit.  
0.450" - 0.535" diameter Type MC cable interlocked armor with or without overall PVC extrusion, Type AC, HCF, and Flexible Metal Conduit.  
Fits sizes 14/2 - 10/3 steel armored cable.  
Fits sizes 14/2 - 12/4 aluminum armored cable.

**Use:**  
CBC-75 and CBC-5075: 1/2" trade size steel and aluminum RW FSC  
0.570" - 0.795" diameter MC cable  
Fits sizes 10/4, 10/5, 8/3, 8/4, 6/3 armored cable

**Standards :**  
UL listed for grounding 600V or less.  
UL Listed concrete tight when taped.  
UL Standard 514B

**Certification:**  
UL/CUL

### Fast Cable Connectors

Fast Cable connectors are designed for safe and fast installations of flex, MC, AC, and HCF cable – and cover the widest cable ranges in the industry. They save time too – about 17 seconds per fitting. Just snap the fitting onto the cable, then into the electrical box. No tools are required for the installation. For easier insertion of larger cables or for overlapping cable ranges, use the larger 40AST or 50AST fittings. Easy to remove with a screwdriver – Just lift the ring and twist off.

Part No.	Size	Cable Type	Cable Range
FCC-038	3/8"	MC/HCF Cable Steel and Aluminum	14/2, 14/3, 14/4, 12/2, 12/3, 12/4, 10/2
		MC Cable Continuous Corrugated Aluminum	14/4, 12/2, 12/3, 12/4, 10/2

### Conduit Union

Part No.	Part No.	Size
MCU-050	FMCU-050	1/2"
MCU-075	FMCU-075	3/4"
MCU-100	FMCU-100	1"
MCU-125	FMCU-125	1-1/4"
MCU-150	FMCU-150	1-1/2"
MCU-200	FMCU-200	2"
MCU-250	FMCU-250	2-1/2"
MCU-300	FMCU-300	3"
MCU-400	FMCU-400	4"



Male



Female

**Material:**  
Galvanized steel

**Standards:**UL

## Malleable Iron Fittings



Malleable Iron insulated liquid tight connector--Straight Malleable Iron insulated liquid tight connector--90 Deg Malleable Iron insulated liquid tight connector--45 Deg

**Use:**  
Designed and engineered to ensure excellent performance  
Heavy-duty, impact resistant construction  
Factory installed "O" ring seals against lubricants and Other liquids.  
All malleable iron construction  
Full-size UL locknut  
Threaded locking mechanism ensures secure fit and better holding strength  
Outer bushing conforms to nut and conduit for fast and easy installation

**Materials:**Malleable iron  
**Standards:**UL 514B  
**Certification:**UL/CUL



**Use:**  
Rigid compression type connector used to join Rigid or IMC conduit to a box or enclosure.

**Materials:**Malleable Iron  
**Standards:**UL 514B  
**Certification:**UL/CUL



**Use:**  
Rigid compression type coupling used to join Rigid or IMC conduit to a box or enclosure.

**Materials:**Malleable Iron  
**Standards:**UL 514B  
**Certification:**UL/CUL

### Malleable Iron Insulated Liquid Tight Connector

Part No.			Size
MLTB-4038	MLTB-9038	MLTB-038	3/8"
MLTB-4050	MLTB-9050	MLTB-050	1/2"
MLTB-4075	MLTB-9075	MLTB-075	3/4"
MLTB-4100	MLTB-9100	MLTB-100	1"
MLTB-4125	MLTB-9125	MLTB-125	1-1/4"
MLTB-4150	MLTB-9150	MLTB-150	1-1/2"
MLTB-4200	MLTB-9200	MLTB-200	2"
MLTB-4250	MLTB-9250	MLTB-250	2-1/2"
MLTB-4300	MLTB-9300	MLTB-300	3"
MLTB-4350	MLTB-9350	MLTB-350	3-1/2"
MLTB-4400	MLTB-9400	MLTB-400	4"

### Malleable Iron Rigid Compression Connectors

Part No.		Size
Insulated	Non insulated	
MRCI-050	MRCN-050	1/2 "
MRCI-075	MRCN-075	3/4 "
MRCI-100	MRCN-100	1 "
MRCI-125	MRCN-125	1-1/4 "
MRCI-150	MRCN-150	1-1/2 "
MRCI-200	MRCN-200	2 "
MRCI-250	MRCN-250	2-1/2 "
MRCI-300	MRCN-300	3 "
MRCI-350	MRCN-350	3-1/2 "
MRCI-400	MRCN-400	4 "
MRCI-500	MRCN-500	5 "
MRCI-600	MRCN-600	6 "

### Malleable Iron Rigid Compression coupling

Part No.	Size
MRCOP-050	1/2 "
MRCOP-075	3/4 "
MRCOP-100	1 "
MRCOP-125	1-1/4 "
MRCOP-150	1-1/2 "
MRCOP-200	2 "
MRCOP-250	2-1/2 "
MRCOP-300	3 "
MRCOP-350	3-1/2 "
MRCOP-400	4 "
MRCOP-500	5 "
MRCOP-600	6 "

Squeeze connectors with insulated throats



Part No.	Size
MSCI-038	3/8"
MSCI-050	1/2"
MSCI-075	3/4"
MSCI-100	1"
MSCI-125	1-1/4"
MSCI-150	1-1/2"
MSCI-200	2"
MSCI-250	2-1/2"
MSCI-300	3"
MSCI-350	3-1/2"
MSCI-400	4"

90° Squeeze connectors with insulated throats



Part No.	Size
MSCI-9038	3/8"
MSCI-9050	1/2"
MSCI-9075	3/4"
MSCI-9100	1"
MSCI-9125	1-1/4"
MSCI-9150	1-1/2"
MSCI-9200	2"
MSCI-9250	2-1/2"
MSCI-9300	3"
MSCI-9350	3-1/2"
MSCI-9400	4"

45° Squeeze connectors with insulated throats



Part No.	Size
MSCI-4038	3/8"
MSCI-4050	1/2"
MSCI-4075	3/4"
MSCI-4100	1"
MSCI-4125	1-1/4"
MSCI-4150	1-1/2"
MSCI-4200	2"
MSCI-4250	2-1/2"
MSCI-4300	3"
MSCI-4350	3-1/2"
MSCI-4400	4"

**Use:**  
For armored cable, MC/MCIA/HCF flexible metal conduit, interlocked metal clad cables.  
Male hub threads - NPSM

**Materials:**  
Malleable iron  
Steel locknut  
Stamped steel covers

**Standard Finish:**  
Zinc plated  
2-1/2" to 4" zinc plated & painted



**Use:**  
Straight Nonmetallic liquid-tight connectors are used to terminate and seal Liquid -Tight Flexible Nonmetallic Type B Conduit to either an oil-tight, liquid-tight or rain-tight box or enclosure. Connectors can be used with tapered thread female entry or unthreaded knock-out using the provided sealing washer and locknut. Resists Salt Water, Weak Acids, Gasoline, Alcohol, Oil, Grease and Common Solvents  
No Disassembly Required  
Reusable

**Materials :**  
Nylon

**Standards:**  
UL 514B  
CSA C22.2 No. 18

**Certification:**  
UL/CUL



**Use:**  
90° liquid-tight connectors are used to terminate and seal Liquid-Tight Flexible Nonmetallic Type B Conduits at 90° angles to either an oil-tight, liquid-tight or rain-tight box or enclosure. Connectors can be used with tapered thread female entry or unthreaded knock-out using the provided sealing washer and locknut.  
Resists Salt Water, Weak Acids, Gasoline, Alcohol, Oil, Grease and Common Solvents  
No Disassembly Required  
Reusable

**Materials :**  
Nylon

**Standards:**  
UL 514B  
CSA C22.2 No. 18

**Certification:**  
UL/CUL

Nonmetallic Liquid Tight Connector-Straight

Part No.	Size
NMLT-038	3/8"
NMLT-050	1/2"
NMLT-075	3/4"
NMLT-100	1"
NMLT-125	1-1/4"
NMLT-150	1-1/2"
NMLT-200	2"

Nonmetallic Liquid Tight Connector-90 degree

Part No.	Size
NMLT-9038	3/8"
NMLT-9050	1/2"
NMLT-9075	3/4"
NMLT-9100	1"
NMLT-9125	1-1/4"
NMLT-9150	1-1/2"
NMLT-9200	2"





PVC Nonmetallic Liquidtight Connector-90 Degree

Part No.	Size
PLT-9038	3/8"
PLT-9050	1/2"
PLT-9075	3/4"
PLT-9100	1"
PLT-9125	1-1/4"
PLT-9150	1-1/2"
PLT-9200	2"

**Use:**

For use type B, nonmetallic conduit Constructed from UV rated plastic for long life, standard grey color No spin ferrule allows easy one piece assembly to conduit Internal gland provides positive seal when nut is tightened Polypropylene sealing ring assures tight seal between fitting and box Available in one-piece or traditional multi-piece configurations.

**Materials :**

PVC

**Standards:**

UL/CUL



PVC Nonmetallic Liquidtight Connector-straight

Part No.	Size
PLT-038	3/8"
PLT-050	1/2"
PLT-075	3/4"
PLT-100	1"
PLT-125	1-1/4"
PLT-150	1-1/2"
PLT-200	2"

**Use:**

For use type B, nonmetallic conduit Constructed from UV rated plastic for long life, standard grey color No spin ferrule allows easy one piece assembly to conduit Internal gland provides positive seal when nut is tightened Polypropylene sealing ring assures tight seal between fitting and box Available in one-piece or traditional multi-piece configurations.

**Materials :**

PVC

**Standards:**

UL/CUL



PVC Female Adapter

Part No.	Size
PFA-050	1/2"
PFA-075	3/4"
PFA-100	1"
PFA-125	1-1/4"
PFA-150	1-1/2"
PFA-200	2"

**Use:**

PVC Female Adapter Allows you to connect PVC pipes to each other or transition to metal or copper pipes Equipped with double sided ends;one end is threaded,and the other is solvent weldable,so you can connect conduit in either way.

**Materials :**

PVC

**Certification:**

UL/CUL



PVC Male Adapter

Part No.	Size
PMA-050	1/2"
PMA-075	3/4"
PMA-100	1"
PMA-125	1-1/4"
PMA-150	1-1/2"
PMA-200	2"

**Use:**

Specifically designed and made to join conduit to an outlet or junction box. Made from non-conductive, non-corrosive PVC, so it will not rust, corrode or carry a charge. Threaded for security and easy installation.

**Materials :**

PVC

**Certification:**

UL/CUL



PVC Coupling

Part No.	Size
PSC-050	1/2"
PSC-075	3/4"
PSC-100	1"
PSC-125	1-1/4"
PSC-150	1-1/2"
PSC-200	2"

**Use:**

These PVC couplings are perfect for placing your conduit underground for direct burial, or encasing it in concrete. Allows you to join together cut pieces of conduit with the use of solvent. Can be used without fear of deterioration above ground, even in direct sunlight; however it should not be exposed to physical damage.

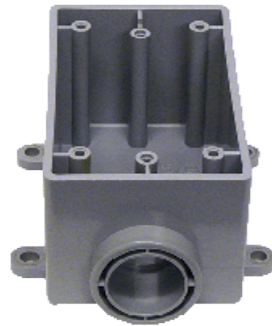
**Materials:**

PVC

**Certification:**

UL/CUL

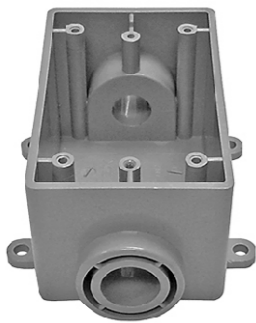
## Plastic Fittings



Type Fse Single Gang Box

Part No.	Size
FSE-050	1/2"
FSE-075	3/4"
FSE-100	1"

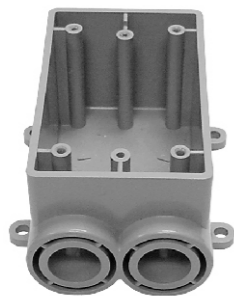
Used for a conduit termination box and for single gang electrical devices.  
 Uses single gang device covers  
 Single gang, surface mounted electrical box which has only one conduit entrance hub with no outlet hub.



Type Fsc Single Gang

Part No.	Size
FSC-050	1/2"
FSC-075	3/4"
FSC-100	1"

Used for straight line conduit runs and splices.  
 Uses single gang electrical device cover.  
 Single gang, surface mounted electrical box which has one conduit entrance hub in each of the two short walls of the box



Type Fss Single Gang Box

Part No.	Size
FSS-050	1/2"
FSS-075	3/4"
FSS-100	1"

Single gang, surface mounted electrical box which has two conduit entrance hubs on one short wall of the box only.  
 Uses single gang device cover.

## Plastic Fittings



PVC Electrical Junction Box

Part No.	Size
PB442	4"x4"x2"
PB444	4"x4"x4"
PB664	6"x6"x4"
PB666	6"x6"x6"
PB884	8"x8"x4"
PB886	8"x8"x6"
PB887	8"x8"x7"
PB12124	12"x12"x4"
PB12126	12"x12"x6"

**Features**  
 Molded nonmetallic junction Box  
 Foam-in-place gasketed lid attached with stainless-steel screws  
 Features foam-gasketed lid  
 NEMA type 6P and type 4X ratings  
 PVC  
 Gray



PVC Slab Boxes

Part No.	Size
CSMB-10	8x1/2
CSMB-15	8x3/4
CSMB-10/15	4x1/2 , 4x3/4
CSMB-10/15/20	4x1/2 , 2x3/4 , 2x1

Slab boxes are engineered tough and completely concrete-tight. No more stuffing boxes with paper to keep concrete out. Made of non-metallic, non-conductive and non-corroding PVC, these fittings are durable, lightweight and highly engineered; perfect for the tough poured wall environment.

**Features**  
 Approved for use in non-combustible 2 hour and 4 hour fire-rated/ceiling assemblies  
 Easily connects with ENT  
 Completely concrete-tight  
 Non-metallic / non-conducting / non-corroding  
 All molded connectors have 360° locking tabs that exceed UL and CSA requirements for pull-out.





Schedule 40 & 80 special fitting  
A two-piece coupling with solvent weld bells-  
in each end  
The spigot part of the joint slides through an-  
internal o-ring to compensate for -  
temperature changes  
Conforms to NEMA TC-3 and UL 514

Expansion Coupling - 2 Piece

Part No.	Size
EC-038	3/8"
EC-050	1/2"
EC-075	3/4"
EC-100	1"
EC-125	1-1/4"
EC-150	1-1/2"
EC-200	2"



Select part number for detailed information  
and technical drawing.  
A u-shaped conduit support device used to  
anchor conduit to interior or exterior  
surfaces. May also be called a clamp.  
Two holes in the feet of the strap allow  
mounting with screws or nails.

Two Hole Straps

Part No.	Size
PS038-2	3/8"
PS050-2	1/2"
PS075-2	3/4"
PS100-2	1"
PS125-2	1-1/4"
PS150-2	1-1/2"
PS200-2	2"



Used in concrete vault walls to provide a smooth,  
safe entrance to the conduit outside.  
Protects wiring which is being pulled through  
the vault wall.

Schedule 40 End Bells

Part No.	Size
EB-038	3/8"
EB-050	1/2"
EB-075	3/4"
EB-100	1"
EB-125	1-1/4"
EB-150	1-1/2"
EB-200	2"



Part No.	Size
SIB-050	1/2"
SIB-075	3/4"
SIB-100	1"

Dimension

Mounting Dia: 25mm / 0.98" ; Inner Dia: 20.4mm / 0.8" ; Height: 11.3mm / 0.44" ;  
Outer Dia: 28.5mm / 1.12"

High Quality Material

Snap Bushing made of plastic, good comprehensive performance, wear-resistant,  
corrosion-resistant, durable to make it long-term to use. Material: Pa66

Easy to install

Fingertip pressure snap-locks the bushing into its mounting hole

Function

Absorbs vibration and cushions and insulates cables, tubing, hoses or shafts with  
limited internal clearance

Application

Cable Snap Bushing widely used in electrified railway and power grid wire insulation  
protection, cable snap bushing insulated protection.



Part No.	Size
KL-7259	3/8"

Durable polypropylene construction resists corrosion  
Universal design allows for flexibility in a variety of metal stud openings  
UL and CUL listings for your safety and peace of mind  
Lightweight and snap-in design installs quickly; no tools required



ENT Form Stubby

Part No.	Size
TSB-10	1/2"
TSB-15	3/4"
TSB-20	1"
TSB-25	1 1/4"

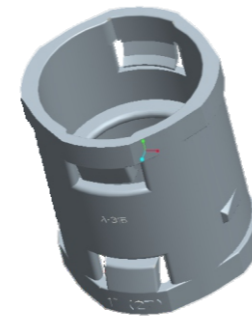
ENT Conduit Form Stubby are designed to provide a quick, easy connection to a wood deck or transition from slab-to-slab using simply snap the ENT in place. The integral snaps provide a secure mount — preventing the ENT from pulling out while enabling easy removal of the fitting once the deck is removed. All in a concrete-tight application. The underside of this fitting provides ample room to attach a coupling to the ENT to continue the run. ENT Conduit Form Stubby are manufactured out of a highly engineered thermoplastic material to provide extra strength and durability and are available in sizes 1/2", 3/4", 1" and 1 1/4"



ENT Form Stubby 45°

Part No.	Size
ASTB-10	1/2"
ASTB-15	3/4"
ASTB-20	1"
ASTB-25	1 1/4"
ASTB-30	1 1/2"

ENT form Stubby 45° are designed to provide a smooth transition from cross-deck ENT runs to vertical applications. The integral snaps provide a secure mount — preventing the ENT from slipping or pulling out — but also enable the stub to easily be removed. The underside of this fitting provides ample room to attach coupling to the ENT to continue the run. ENT form Stubby 45° are manufactured out of a highly engineered thermoplastic material to provide extra strength and durability. They're concrete-tight and available in sizes 1/2", 3/4", 1", 1 1/4" and 1 1/2".



Snap In Couplings

Part No.	Size
EKC-10	1/2"
EKC-15	3/4"
EKC-20	1"



Threaded Adapters

Part No.	Size
EKT-10	1/2"
EKT-15	3/4"
EKT-20	1"



Snap In Adapters

Part No.	Size
EKTC-10	1/2"
EKTC-15	3/4"
EKTC-20	1"

Features:

- Snap In Couplings, Threaded Adapters and Snap In Adapters are suitable for damp locations
- Snap In Couplings, Threaded Adapters and Snap In Adapters are concrete-tight when used with ENT (Electrical Nonmetallic Tubing).
- All sizes of rigid non-metallic conduit fittings are compatible with ENT when using ENT cement.



## Plastic Fittings



### Cable Gland

#### Use:

UL approved Nylon PA66 (Flammability UL 94V-0) for lock nut, body, claw, sealing nut parts; EPDM rubber for washer and seal parts.

Metric thread	Range of bayonet (mm)
M12*1.5	3-6.5
M16*1.5	4-8
M18*1.5	5-10
M20*1.5	10-14
M22*1.5	10-14
M25*1.5	13-18
M32*1.5	16-21
M36*1.5	18-25
M40*1.5	22-32
M50*1.5	32-38
M63*1.5	37-44

PG thread	Range of bayonet (mm)
PG7	3-6.5
PG9	4-8
PG11	5-10
PG13.5	6-12
PG16	10-14
PG21	13-18
PG29	18-25
PG36	22-32
PG42	32-38
PG48	37-44

NPT thread	Range of bayonet (mm)
NPT3/8"	4-8
NPT1/2"	6-12
NPT3/4"	13-18
NPT1"	18-25
NPT1-1/4"	18-25
NPT1-1/2"	22-32

## Conduit Body

### LB type conduit body



Aluminum LB conduit body

Malleable LB conduit body without cover and gasket

PVC LB conduit body

#### Use:

Conduit bodies are used to gain access to the interior of a raceway for wire pulling, inspection and maintenance where the raceway changes direction.

Assembled with Cover and Gasket

#### Materials :

Aluminum/Malleable iron/PVC

#### Standards :

UL 514B/CSA C22.2 No. 18

#### Certification:

UL/CUL

Part No.			Size
ALB17	MLB17	PLB17	1/2"
ALB27	MLB27	PLB27	3/4"
ALB37	MLB37	PLB37	1"
ALB47	MLB47	PLB47	1-1/4"
ALB57	MLB57	PLB57	1-1/2"
ALB67	MLB67	PLB67	2"
ALB77	MLB77	PLB77	2-1/2"
ALB87	MLB87	PLB87	3"
ALB97	MLB97	PLB97	3-1/2"
ALB107	MLB107	PLB107	4"

### LL type conduit body



Aluminum LL conduit body

Malleable LL conduit body without cover and gasket

PVC LL conduit body

#### Use:

Conduit bodies are used to gain access to the interior of a raceway for wire pulling, inspection and maintenance where the raceway changes direction.

Assembled with Cover and Gasket

#### Materials :

Aluminum/Malleable iron/PVC

#### Standards :

UL 514B/CSA C22.2 No. 18

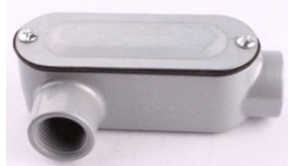
#### Certification:

UL/CUL

Part No.			Size
ALL17	MLL17	PLL17	1/2"
ALL27	MLL27	PLL27	3/4"
ALL37	MLL37	PLL37	1"
ALL47	MLL47	PLL47	1-1/4"
ALL57	MLL57	PLL57	1-1/2"
ALL67	MLL67	PLL67	2"
ALL77	MLL77	PLL77	2-1/2"
ALL87	MLL87	PLL87	3"
ALL97	MLL97	PLL97	3-1/2"
ALL107	MLL107	PLL107	4"

## Conduit Body

### LR type conduit body



Aluminum LR conduit body



Malleable LR conduit body without cover and gasket



PVC LR Conduit Body

**Use:**

Conduit bodies are used to gain access to the interior of a raceway for wire pulling, inspection and maintenance where the raceway changes direction.

Assembled with Cover and Gasket

**Materials :**

Aluminum/Malleable iron/PVC

**Standards :**

UL 514B/CSA C22.2 No.18

**Certification:**

UL/CUL

Part No.			Size
ALR17	MLR17	PLR17	1/2"
ALR27	MLR27	PLR27	3/4"
ALR37	MLR37	PLR37	1"
ALR47	MLR47	PLR47	1-1/4"
ALR57	MLR57	PLR57	1-1/2"
ALR67	MLR67	PLR67	2"
ALR77	MLR77	PLR77	2-1/2"
ALR87	MLR87	PLR87	3"
ALR97	MLR97	PLR97	3-1/2"
ALR107	MLR107	PLR107	4"

### C type conduit body



Aluminum C conduit body



Malleable C conduit body without cover and gasket



PVC C Conduit Body

**Use:**

Conduit bodies are used to gain access to the interior of a raceway for wire pulling, inspection and maintenance where the raceway changes direction.

Assembled with Cover and Gasket

**Materials :**

Aluminum/Malleable iron/PVC

**Standards :**

UL 514B/CSA C22.2 No.18

**Certification:**

UL/CUL

Part No.			Size
AC17	MC17	PC17	1/2"
AC27	MC27	PC27	3/4"
AC37	MC37	PC37	1"
AC47	MC47	PC47	1-1/4"
AC57	MC57	PC57	1-1/2"
AC67	MC67	PC67	2"
AC77	MC77	PC77	2-1/2"
AC87	MC87	PC87	3"
AC97	MC97	PC97	3-1/2"
AC107	MC107	PC107	4"

## Conduit Body

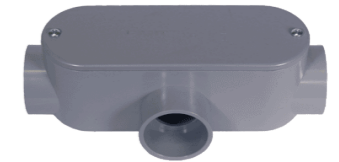
### T type conduit body



Aluminum T conduit body



Malleable T conduit body without cover and gasket



PVC T Conduit Body

**Use:**

Conduit bodies are used to gain access to the interior of a raceway for wire pulling, inspection and maintenance where the raceway changes direction.

Assembled with Cover and Gasket

**Materials :**

Aluminum/Malleable iron/PVC

**Standards :**

UL 514B/CSA C22.2 No.18

**Certification:**

UL/CUL

Part No.			Size
AT17	MT17	PT17	1/2"
AT27	MT27	PT27	3/4"
AT37	MT37	PT37	1"
AT47	MT47	PT47	1-1/4"
AT57	MT57	PT57	1-1/2"
AT67	MT67	PT67	2"
AT77	MT77	PT77	2-1/2"
AT87	MT87	PT87	3"
AT97	MT97	PT97	3-1/2"
AT107	MT107	PT107	4"

### Cover and gasket



**Use:**

Die cast aluminum or Malleable Iron screw Covers & Gasket and neoprene gasket seals protect wires from weather damage.

Part No.	Size
AC1 & N1	1/2"
AC2 & N2	3/4"
AC3 & N3	1"
AC4 & N4	1-1/4" & 1-1/2"
AC5 & N5	2"
AC5 & N6	2-1/2" & 3"
AC5 & N8	3-1/2" & 4"



BS Conduit body-Malleable iron

**Tee**



Part No.	Size (mm)
T-20	20
T-25	25
T-32	32

**Intersection**



Part No.	Size (mm)
L-20	20
L-25	25
L-32	32

**Through**



Part No.	Size (mm)
TH-20	20
TH-25	25
TH-32	32

**Branch Two Way(U)**



Part No.	Size (mm)
BR-20	20
BR-25	25
BR-32	32

**Terminal**



Part No.	Size (mm)
TL-20	20
TL-25	25
TL-32	32

**Branch Three Way(Y)**



Part No.	Size (mm)
BN-20	20
BN-25	25
BN-32	32

**Angle**



Part No.	Size (mm)
A-20	20
A-25	25
A-32	32

**Saddle Distanc**



Part No.	Size (mm)
S-20	20
S-25	25
S-32	32

Steel EMT One Hole Straps

Part No.	Size
ES050-1	1/2"
ES075-1	3/4"
ES100-1	1"
ES125-1	1-1/4"
ES150-1	1-1/2"
ES200-1	2"
ES250-1	2-1/2"
ES300-1	3"
ES350-1	3-1/2"
ES400-1	4"



**Use:**

One hole straps are used for providing support for steel EMT Conduit as required by the National Electrical Code. Click-On Type

**Materials :**

Stamped Steel

**Finish :**

Zinc Plated

**Standards:**

UL2239/CSA C22.2 No.18

**Certification:**

UL/CUL

Steel EMT Two Hole Straps

Part No.	Size
ES050-2	1/2"
ES075-2	3/4"
ES100-2	1"
ES125-2	1-1/4"
ES150-2	1-1/2"
ES200-2	2"
ES250-2	2-1/2"
ES300-2	3"
ES350-2	3-1/2"
ES400-2	4"



**Use:**

Used for providing support for steel EMT Conduit where higher load bearing supports are desired as required by the National Electrical Code. Click-On Type

**Materials :**

Stamped Steel

**Finish :**

Zinc Plated

**Standards :**

UL 2239/CSA C22.2 No. 18

**Certification:**

UL/CUL



**Use:**  
Used for providing support for Rigid or IMC Conduit as required by the National Electrical Code.  
Click-On Type

**Materials :**  
Stamped Steel

**Finish :**  
Zinc Plate

**Standards:**  
UL2239/CSA C22.2 No. 18

**Certification:**  
UL/CUL

Rigid One Hole Straps

Part No.	Size
RS050-1	1/2"
RS075-1	3/4"
RS100-1	1"
RS125-1	1-1/4"
RS150-1	1-1/2"
RS200-1	2"
RS250-1	2-1/2"
RS300-1	3"
RS350-1	3-1/2"
RS400-1	4"



**Use:**  
Two hole straps are used for providing support for Rigid or IMC Conduit as required by the National Electrical Code where higher load bearing supports are desired.  
Click-On Type

**Materials :**  
Stamped Steel

**Finish :**  
Zinc Plated

**Standards :**  
UL 2239/CSA C22.2 No. 18

**Certification:**  
UL/CUL

Rigid Two Hole Straps

Part No.	Size
RS050-2	1/2"
RS075-2	3/4"
RS100-2	1"
RS125-2	1-1/4"
RS150-2	1-1/2"
RS200-2	2"
RS250-2	2-1/2"
RS300-2	3"
RS350-2	3-1/2"
RS400-2	4"



**Use:**  
Wire Sizes 14, 12, And 10, In 2 Or 3 Conductor, With Or Without Ground  
Also 14 In Uf

**Materials :**  
Galvanized steel

NM-Cable Strap One Hole (one hole SEU strap)

Part No.	Size
NMS1-1	14/2-12/2
NMS1-2	8/3-4/3
NMS1-3	3/3-2/3
NMS1-4	1-2/0
NMS1-5	3/0-4/0



**Use:**  
14-2, 14-3, 12-2, And 10-2, With Or Without Ground; Also Uf, 14-2, 14-3, And 12-2 With Or Without Ground

**Materials :**  
Galvanized Steel

NM-Cable Strap Two Hole (two hole SEU strap)

Part No.	Size
NMS2-1	8/3-4/3
NMS2-2	3/3-2/3
NMS2-3	1-2/0
NMS2-4	3/0-4/0



**Use:**  
1/2 Round Cable

**Materials :**  
Galvanized Steel

Flex Cable Strap One Hole (Romex and SEU strap)

Part No.	Size
FCS1	14/2-12/2



## Conduit Strap

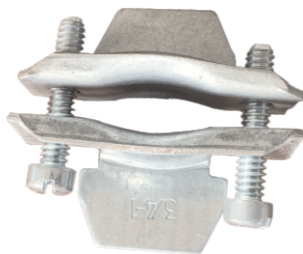


**Materials:**Galvanized steel

### BX one hole strap

Part No.	Size
BXS038-1	3/8"

### Two piece connector



**Materials:**Galvanized steel

Part No.	Size
TPC-1	3/8"
TPC-2	3/4"-1"
TPC-3	1-1/4"
TPC-4	1-1/2"

### Roof Flashing



**Application:**Outdoors.  
Use to prevent water leaks in overhead services where conduit mast penetrates the roof surface. Slips over conduit mast and mounts to the roof.  
**Materials:** Galvanized steel with Neoprene seal.

Part No.	Size
RF 50	1/2"-1"
RF 125	1 1/4"-1"
RF 200	2"
RF 250	2 1/2"

## Conduit Ferrule

### Steel Ferrule



**Materials:**Galvanized steel

Part No.	Size
SF-038	3/8"
SF-050	1/2"
SF-075	3/4"
SF-100	1"
SF-125	1-1/4"
SF-150	1-1/2"
SF-200	2"
SF-250	2-1/2"
SF-300	3"
SF-350	3-1/2"
SF-400	4"
SF-500	5"
SF-600	6"

### Steel Gap ferrule



**Materials:**Galvanized steel

Part No.	Size
SGF-038	3/8"
SGF-050	1/2"
SGF-075	3/4"
SGF-100	1"
SGF-125	1-1/4"
SGF-150	1-1/2"
SGF-200	2"
SGF-250	2-1/2"
SGF-300	3"
SGF-400	4"



Type S Knockout Seals

Part No.	Size
SKS-050	1/2"
SKS-075	3/4"
SKS-100	1"
SKS-125	1-1/4"
SKS-150	1-1/2"
SKS-200	2"
SKS-250	2-1/2"
SKS-300	3"
SKS-350	3-1/2"
SKS-400	4"

Features:

Type S Knockout Seals With Screw & Bar - Set Screw/Bar Type Knockout Seals Are Inserted In Open Box Knockouts To Protect Exposed Wires.  
 Set Screw/Bar Type Knockout Seals Are Inserted In Open Box Knockouts To Protect Exposed Wires  
 Used In Standard, Air Tight Or Dust Tight Applications  
 Pre-Assembled Screw And Backer Bar Slides On Open Knockout Holes Without Removing Box Devices Or Covers  
 Steel Galvanized



Use:

Knock-out seals are used to close exposed holes in an outlet box or metal enclosure.

**Materials :**  
Steel

Steel Knockout Seals

Part No.	Size
KOS-050	1/2"
KOS-075	3/4"
KOS-100	1"
KOS-125	1-1/4"
KOS-150	1-1/2"
KOS-200	2"



Use:

The Body of one piece strut hanger are used to secure and suspend EMT, Rigid, IMC and PVC Conduits and conduit channel from overhead supports.  
 With Carriage Bolt and Nut Attached

**Materials :**  
Stamped Steel

**Finish :**  
Zinc Plated

**Standards :**  
UL 2239  
CSA C22.2 No. 18

**Certification:**  
UL/CUL



Use:

Conduit hangers are used to secure and suspend EMT, Rigid, IMC and PVC Conduits from overhead supports.  
 With Carriage Bolt and Nut Attached

**Materials :**  
Stamped Steel

**Finish :**  
Zinc Plated

**Standards :**  
UL 2239  
CSA C22.2 No. 18

**Certification:**  
UL/CUL



Use:

"One size fits both EMT conduit and Rigid pipe sizes One-piece break "apart design includes captive combo head machine screw and built-in nut (thread impression)

**Surface finish:**  
zinc plated

**Materials:**  
steel

**Certification:**  
UL/CUL

The Body of one piece strut hanger

Part No.	Size
OPSC-050	1/2"
OPSC-075	3/4"
OPSC-100	1"
OPSC-125	1-1/4"
OPSC-150	1-1/2"
OPSC-200	2"
OPSC-250	2-1/2"
OPSC-300	3"
OPSC-350	3-1/2"
OPSC-400	4"

Conduit Hangers

Part No.	Size	
CH-050	#0	1/2"
CH-075	#1	3/4"
CH-100	#2	1"
CH-125	#2-1/2	1-1/4"
CH-125A	#3	11/4h.w.11/2emt
CH-150	#4	1-1/2"
CH-200	#5	2"
CH-250	#6	2-1/2"
CH-300	#7	3"
CH-350	#8	3-1/2"
CH-510	#9	4"

Universal Strut Clamps for RMC and EMT

Part No.	Size
STC-050	1/2"
STC-075	3/4"
STC-100	1"
STC-125	1-1/4"
STC-150	1-1/2"
STC-200	2"
STC-250	2-1/2"
STC-300	3"
STC-350	3-1/2"
STC-400	4"



Swivel Band Hanger



General Properties

Used for freely hanging of horizontal pipe lines  
 Used for sprinkler system installations  
 Used for fire extinguishing systems  
 Height adjustment through threaded rods  
 Electro galvanized for corrosion resistance (Plating thickness 8-10 micron)  
 UL Listed

Part No.	Size	Rod Size	Max Load lbs	Width&Thick mm	
SBH-050	1/2"	3/8"	M10	300	16*1.2
SBH-075	3/4"	3/8"	M10	300	16*1.2
SBH-100	1"	3/8"	M10	300	16*1.2
SBH-125	1-1/4"	3/8"	M10	300	16*1.2
SBH-150	1-1/2"	3/8"	M10	300	16*1.2
SBH-200	2"	3/8"	M10	300	16*1.2
SBH-250	2-1/2"	3/8"	M10	600	16*1.2
SBH-300	3"	3/8"	M10	600	22*1.5
SBH-350	3-1/2"	3/8"	M10	600	22*1.5
SBH-400	4"	3/8"	M10	1000	22*1.5
SBH-500	5"	1/2"	M12	1000	22*1.5
SBH-600	6"	1/2"	M12	1200	22*1.5
SBH-800	8"	1/2"	M12	1200	19*2.5
					19*2.5

Light Duty Clevis Hanger



Finishes Zinc Plated

Materials Carbon Steel

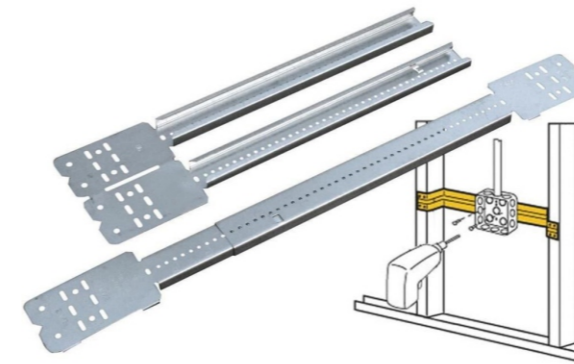
Approvals UL

Recommended Recommended for the suspension of non-insulated stationary pipe lines allowing for vertical adjustment.

Maximum temperatures Bare Metal 650°F Galvanized & Epoxy 450°F

Part No.	Size	Max Load lbs	Packing pcs
LDCH-050	1/2"	250	100
LDCH-075	3/4"	250	100
LDCH-100	1"	250	100
LDCH-125	1-1/4"	250	100
LDCH-150	1-1/2"	250	100
LDCH-200	2"	250	100
LDCH-250	2-1/2"	350	50
LDCH-300	3"	350	25
LDCH-350	3-1/2"	350	25
LDCH-400	4"	400	25

Adjustable Box Mounting Brackets

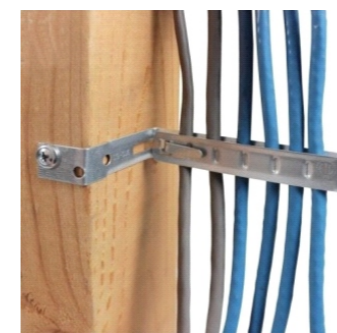


Product Features

Can mount multiple boxes  
 Notched and marked for easy identification and bending  
 Improved design with stamped inch markings and pilot holes accelerates precise box conduit mounting between studs  
 Pilot holes allow easy box attachment with a screwdriver  
 Requires only a screw gun to install  
 Can be mounted to face or inside of stud  
 Adjustable for non-standard stud spacing  
 Interlocking tab prevents accidental disassembly  
 Unique, one-piece, break apart design  
 Use with our U431-406 Wafer Head Self Drill Screws for attaching these brackets to a metal stud  
 and the back boxes to the bracket

Part No.	Stud Spacing(cm)	Box Depth (Inch)	Quantity
SGB-16	28-45	1-1/2 - 2-1/8	50
SGB-24	43-66	1-1/2 - 2-1/8	50

Stud Wall Cable Supports



Material:

Galvanized steel

Size:

Cj6

Certificates:

UL standard

Use:

stud wall cable supports allow easy installation to secure NM or MC cables to wood or metal studs.

NM sheathed cable or up to 4 runs of MC and AC cables.





**Use:**  
Indoors or Outdoors. Use to secure Rigid or IMC conduit to wood, masonry or similar surfaces where greater load bearing is required.

**Materials :**  
Malleable iron

**Finish :**  
Zinc Plated

**Standards :**  
UL 2239  
CSA C22.2 No. 18

**Certification:**  
UL/CUL

Single Hole Clamp Straps

Part No.	Size
RMS-050	1/2"
RMS-075	3/4"
RMS-100	1"
RMS-125	1-1/4"
RMS-150	1-1/2"
RMS-200	2"
RMS-250	2-1/2"
RMS-300	3"
RMS-350	3-1/2"
RMS-400	4"



**Use:**  
Indoors or outdoors. Use to secure Rigid or IMC conduit to mounting surface, surface. Zinc Electro-Plate. and to provide space between conduit and mounting surface, and to provide space between conduit and mounting surface.

**Materials :**  
Malleable Iron

**Finish :**  
Zinc Plated

**Standards :**  
UL 2239  
CSA C22.2 No. 18

**Certification:**  
UL/CUL

Single Hole Clamp Backs

Part No.	Size
MCB-050	1/2"
MCB-075	3/4"
MCB-100	1"
MCB-125	1-1/4"
MCB-150	1-1/2"
MCB-200	2"
MCB-250	2-1/2"
MCB-300	3"
MCB-350	3-1/2"
MCB-400	4"



Ground Clamp---Bronze

Part No	Size
GCA-50	1/2"~1"
GCA-125	1-1/4"~2"
GCA-250	2-1/2"~4"



Ground Clamp---Zinc

Part No	Size
GCE-50	1/2"~1"



Copper Ground Rod Clamp

Part No	Size
GRC-12	1/2"
GRC-34	3/4"
GRC-58	5/8"



Split Bolt Connector

Part No	Size
SBC10	T/J10
SBC16	T/J16
SBC25	T/J25
SBC35	T/J35
SBC50	T/J50-70
SBC90	T/J90-120
SBC150	T/J150-185



MI Beam Clamp

Part No	Size
BC-1420	1/4"-20
BC-3816	3/8"-16



MI Beam Clamp

Part No	Size
MBC-1420	1/4"-20
MBC-3816	1/4"-38
MBC-1213	1/2"-13



MI Beam Clamp

Part No	Size
SBCE-1	M8
SBCE-2	M10
SBCE-3	M12



MI Beam Clamp

Part No	Size
SBCD-1	M8
SBCD-2	M10



Right Angle Clamp

Part No.	Size
RAC-050	1/2"
RAC-075	3/4"
RAC-100	1"
RAC-125	1-1/4"
RAC-150	1-1/2"
RAC-200	2"
RAC-250	2-1/2"
RAC-300	3"
RAC-350	3-1/2"
RAC-400	4"

**Use:**

Beam clamps are used on a beam, girder or other similar structure to provide a mounting base for conduit hangers.

Galvanized Perforated strap



**Material:**

24 Gauge Copper  
24/28 Gauge Galvanized Steel

**Safe Work Load:**

Copper Strap= 70 lbs.  
Galvanized Strap = 46 lbs.

**Use:**

The metal hanger Strap provides a fast and economical method for hanging pipes. It can be used as a pipe hanger, conduit and duct hanger, tubing strap, utility strap and more.

**Precautions:**

Ensure proper spacing requirements for piping support. Read cautions and directions on packages carefully before using the product. KEEP OUT OF REACH OF CHILDREN.

ItemNo	Description	Pack
MHS-1	3/4" x 10' Copper Plated Steel Hanger Strap – 24 Gauge (bagged)	12
MHS-2	3/4" x 10' Copper Plated Steel Hanger Strap – 24 Gauge (bulk)	50
MHS-3	3/4" x 10' Galvanized Hanger Strap – 24 Gauge (bagged)	50
MHS-4	3/4" x 10' Galvanized Hanger Strap – 24 Gauge (bagged)	12
MHS-5	3/4" x 10' Galvanized Hanger Strap – 24 Gauge (boxed)	50
MHS-6	3/4" x 10' Galvanized Hanger Strap – 28 Gauge (bagged)	12
MHS-7	3/4" x 10' Galvanized Hanger Strap – 28 Gauge (bagged)	50
MHS-8	3/4" x 25' Galvanized Hanger Strap – 28 Gauge (bagged)	12
MHS-9	3/4" x 10' Galvanized Hanger Strap – 28 Gauge (boxed)	50
MHS-10	3/4" x 50' Galvanized Hanger Strap – 28 Gauge (boxed)	10
MHS-11	3/4" x 100' Galvanized Hanger Strap – 28 Gauge (boxed)	10

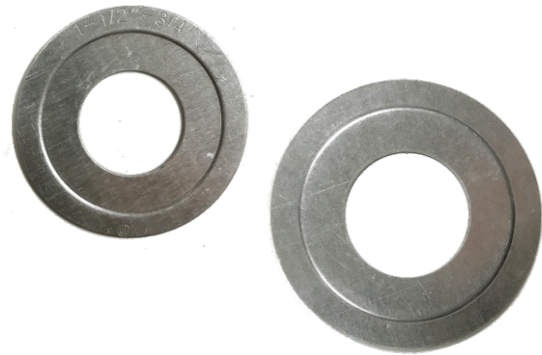
U bolts

Part No.	Size
UB-050	1/2"
UB-075	3/4"
UB-100	1"
UB-125	1-1/4"
UB-150	1-1/2"
UB-200	2"
UB-250	2-1/2"
UB-300	3"
UB-400	4"



Copper Bonded Grounding Rod

Part No.	Size
CGR-50	1/2"
CGR-58	5/8"
CGR-75	3/4"



Steel Reducing Washers

Part No.	Size
RWS-75/50	3/4"~1/2"
RWS-100/50	1"~1/2"
RWS-100/75	1"~3/4"
RWS-125/100	1-1/4"~1"
RWS-125/75	1-1/4"~1/2"
RWS-125/75	1-1/4"~3/4"
RWS-150/100	1-1/2"~1"
RWS-150/125	1-1/2"~1-1/4"
RWS-150/50	1-1/2"~1/2"
RWS-150/75	1-1/2"~3/4"
RWS-200/100	2"~1"
RWS-200/125	2"~1-1/4"
RWS-200/150	2"~2-1/2"
RWS-200/50	2"~1/2"
RWS-200/75	2"~3/4"
RWS-250/100	2-1/2"~1"
RWS-250/125	2-1/2"~1-1/4"
RWS-250/150	2-1/2"~1-1/2"
RWS-250/200	2-1/2"~2"
RWS-250/50	2-1/2"~1/2"
RWS-250/75	2-1/2"~3/4"
RWS-300/125	3"~1"
RWS-300/100	3"~1-1/4"
RWS-300/150	3"~1-1/2"
RWS-300/200	3"~2"
RWS-300/250	3"~2-1/2"
RWS-300/50	3"~1/2"
RWS-300/75	3"~3/4"
RWS-350/100	3-1/2"~1"
RWS-350/125	3-1/2"~1-1/4"
RWS-350/150	3-1/2"~1-1/2"
RWS-350/200	3-1/2"~2"
RWS-350/250	3-1/2"~2-1/2"
RWS-350/300	3-1/2"~3"
RWS-350/50	3-1/2"~1/2"
RWS-350/75	3-1/2"~3/4"
RWS-400/100	4"~1"
RWS-400/125	4"~1-1/4"
RWS-400/150	4"~1-1/2"
RWS-400/200	4"~2"
RWS-400/250	4"~2-1/2"
RWS-400/300	4"~3"
RWS-400/350	4"~3-1/2"
RWS-400/50	4"~1/2"
RWS-400/75	4"~3/4"

**Use:**

Reduce knockout size on sheet metal box, enclosure or cabinet

**Materials :**

Galvanized Steel

**Finish :**

Zinc Plated

**Certification:**

UL/CUL



**Materials:**

Galvanized steel

Steel Locknut

Part No.	Size
SLN-050	1/2"
SLN-075	3/4"
SLN-100	1"
SLN-125	1-1/4"
SLN-150	1-1/2"
SLN-200	2"
SLN-250	2-1/2"
SLN-300	3"
SLN-350	3-1/2"
SLN-400	4"



**Materials:**

Zinc die cast

Zinc Locknut

Part No.	Size
ZLN-050	1/2"
ZLN-075	3/4"
ZLN-100	1"
ZLN-125	1-1/4"
ZLN-150	1-1/2"
ZLN-200	2"
ZLN-250	2-1/2"
ZLN-300	3"
ZLN-350	3-1/2"
ZLN-400	4"





**Materials:**  
Galvanized steel

Sealing Locknut

Part No.	Size
SSLN-050	1/2"
SSLN-075	3/4"
SSLN-100	1"
SSLN-125	1-1/4"
SSLN-150	1-1/2"
SSLN-200	2"
SSLN-250	2-1/2"
SSLN-300	3"
SSLN-350	3-1/2"
SSLN-400	4"
SSLN-500	5"
SSLN-600	6"



**Materials:**  
Galvanized steel

Steel Bonding Locknut

Part No.	Size
SBL-50	1/2"
SBL-75	3/4"
SBL-100	1"
SBL-125	1-1/4"
SBL-150	1-1/2"
SBL-200	2"
SBL-250	2-1/2"
SBL-300	3"
SBL-350	3-1/2"
SBL-400	4"



**Use:**  
Service entrance caps are used as a connecting point in an overhead service entrance and can be mounted on threaded or unthreaded Rigid Conduit, IMC or EMT Conduit.  
Clamp-On Type  
Phenolic Insulator with Multiple Holes  
Listed for Use in Wet Locations

**Materials:**  
Aluminum  
**Standards:**  
UL 514B  
CSA C22.2 No. 18

Service Entrance Cap (Clamp Type)

Part No.	Size
SECC-050	1/2"
SECC-075	3/4"
SECC-100	1"
SECC-125	1-1/4"
SECC-150	1-1/2"
SECC-200	2"
SECC-250	2-1/2"
SECC-300	3"
SECC-350	3-1/2"
SECC-400	4"



**Use:**  
Service entrance caps are used as a connecting point in an overhead service entrance and can be mounted on threaded or unthreaded Rigid Conduit, IMC or EMT Conduit.  
Clamp-On Type  
Phenolic Insulator with Multiple Holes  
Listed for Use in Wet Locations

**Materials:**  
Aluminum  
**Standards:**  
UL 514B  
CSA C22.2 No. 18

Service Entrance Cap (Threaded Type)

Part No.	Size
SETC-050	1/2"
SETC-075	3/4"
SETC-100	1"
SETC-125	1-1/4"
SETC-150	1-1/2"
SETC-200	2"
SETC-250	2-1/2"
SETC-300	3"
SETC-350	3-1/2"
SETC-400	4"



**Use:**  
These split, threaded insulating bushings are used on threaded rigid or IMC conduits when existing wires have already been pulled and an insulating bushing is required on the pipe.

**Materials:**  
PVC

**Certification:**  
UL/CUL

Plastic Insulating Bushing

Part No.	Size
CPB-050	1/2"
CPB-075	3/4"
CPB-100	1"
CPB-125	1-1/4"
CPB-150	1-1/2"
CPB-200	2"
CPB-250	2-1/2"
CPB-300	3"
CPB-350	3-1/2"
CPB-400	4"



**Use:**  
Insulated Metallic Conduit bushings are used on the end of Rigid and IMC Conduits and other threaded connectors to provide a smooth well rounded bearing surface to protect wires or cables.  
Thermo plastic Liner Rated 105°C

**Material:**  
Zinc Die-Cast

**Standards:**  
UL 514B CSA C22.2 No.18

**Certification:**  
UL/CUL

Insulated Metallic Conduit Bushings

Part No.	Size
IMCB-050	1/2"
IMCB-075	3/4"
IMCB-100	1"
IMCB-125	1-1/4"
IMCB-150	1-1/2"
IMCB-200	2"
IMCB-250	2-1/2"
IMCB-300	3"
IMCB-350	3-1/2"
IMCB-400	4"



**Use:**  
Zinc Insulated Grounding Bushing are used on the end of Rigid and IMC Conduits and other threaded connectors to provide a smooth well rounded bearing surface to protect wires or cables as well as providing a means to connect a grounding conductor.

- Nylon Liner Rated 105°C
- 90°C Dual Rated Feed Through Aluminum Lug

**Material:**  
Zinc Insulated Grounding Bushing

**Standards:**  
UL 514B CSA C22.2 No.18

**Certification:**  
UL/CUL

Zinc Insulated Grounding Bushing

Part No.	Size
IMCB-050G	1/2"
IMCB-075G	3/4"
IMCB-100G	1"
IMCB-125G	1-1/4"
IMCB-150G	1-1/2"
IMCB-200G	2"
IMCB-250G	2-1/2"
IMCB-300G	3"
IMCB-350G	3-1/2"
IMCB-400G	4"



**Use:**  
Insulated metallic grounding bushings are used on the end of Rigid and IMC Conduits and other threaded connectors to provide a smooth well rounded bearing surface to protect wires or cables as well as providing a means to connect a grounding conductor.

Nylon Liner Rated 150°C  
90°C Dual Rated Feed Through Aluminum Lug

**Materials:**  
Malleable iron

**Standards:**  
UL 514B CSA C22.2 No.18

**Certification:**  
UL/CUL

Insulated Metallic Grounding Bushing

Part No.	Size
MIGB-050	1/2"
MIGB-075	3/4"
MIGB-100	1"
MIGB-125	1-1/4"
MIGB-150	1-1/2"
MIGB-200	2"
MIGB-250	2-1/2"
MIGB-300	3"
MIGB-350	3-1/2"
MIGB-400	4"

## Conduit Bushing



**Use:**

To reduce the trade size of a tapered entry on a conduit fittings.  
Threaded for rigid conduit and IMC.  
Made with rolled edge, protects wire insulation.

**Materials:**

Galvanized steel

**Certification:**

UL/CUL

### Steel Reducing Bushing

Part No.	Size	Part No.	Size
SRB0	1/2"x3/8"	SRB24	3"x1"
SRB1	3/4"x1/2"	SRB25	3"x1-1/4"
SRB2	1"x1/2"	SRB26	3"x1-1/2"
SRB3	1"x3/4"	SRB27	3"x2"
SRB4	1-1/4"x1/2"	SRB28	3"x2-1/2"
SRB5	1-1/4"x3/4"	SRB29	3-1/2x1/2"
SRB6	1-1/4"x1"	SRB30	3-1/2"x3/4"
SRB7	1-1/2"x1/2"	SRB31	3-1/2"x1"
SRB8	1-1/2"x3/4"	SRB32	3-1/2"x1-1/4"
SRB9	1-1/2"x1"	SRB33	3-1/2"x1-1/2"
SRB10	1-1/2"x1-1/4"	SRB34	3-1/2"x2"
SRB11	2"x1/2"	SRB35	3-1/2"x2-1/2"
SRB12	2"x3/4"	SRB36	3-1/2"x3"
SRB13	2"x1"	SRB37	4"x1/2"
SRB14	2"x1-1/4"	SRB38	4"x3/4"
SRB15	2"x1-1/2"	SRB39	4"x1"
SRB16	2-1/2"x1/2"	SRB40	4"x1-1/4"
SRB17	2-1/2"x3/4"	SRB41	4"x1-1/2"
SRB18	2-1/2"x1"	SRB42	4"x2"
SRB19	2-1/2"x1-1/4"	SRB43	4"x2-1/2"
SRB20	2-1/2"x1-1/2"	SRB44	4"x3"
SRB21	2-1/2"x2"	SRB45	4"x3-1/2"
SRB22	3"x1/2"	SRB46	5"x4"
SRB23	3"x3/4"	SRB47	6"x5"

## Conduits



### Steel Rigid Conduit

Part No.	Size	Nominal Wt. (kg)	Nominal Outside Diameter (mm)	Wall Thickness (mm)	Length (mm)
RSC050	1/2"	3.72	21.34	2.64	3050
RSC075	3/4"	4.94	26.67	2.72	3050
RSC100	1"	7.3	33.4	3.2	3050
RSC125	1-1/4"	9.89	42.16	3.38	3050
RSC150	1-1/2"	11.93	48.26	3.51	3050
RSC200	2"	15.87	60.3	3.71	3050
RSC250	2-1/2"	25.35	73.03	4.9	3050
RSC300	3"	32.97	88.9	5.21	3050
RSC350	3-1/2"	39.91	101.6	5.46	3050
RSC400	4"	46.71	114.3	5.72	3050
RSC500	5"	63.49	141.3	6.22	3050
RSC600	6"	83.45	168.28	6.76	3050

**Materials:**

Steel

**Finish:**

Hot dip galvanized

**Standards:**

UL 6 & ANSI C80.1

**Certification:**

UL & CUL



### Steel IMC Conduit

Part No.	Size	Nominal Wt. (kg)	Nominal Outside Diameter (mm)	Wall Thickness (mm)	Length (mm)
IMC050	1/2"	2.79	20.7	1.98	3050
IMC075	3/4"	3.79	26.14	2.1	3050
IMC100	1"	5.38	32.77	2.35	3050
IMC125	1-1/4"	7.13	41.59	2.41	3050
IMC150	1-1/2"	8.65	47.82	2.54	3050
IMC200	2"	11.49	59.93	2.67	3050
IMC250	2-1/2"	19.71	72.57	3.81	3050
IMC300	3"	24.21	88.29	3.81	3050
IMC350	3-1/2"	27.82	100.86	3.81	3050
IMC400	4"	31.41	113.44	3.81	3050

**Materials:** Steel

**Finish:**

Hot dip galvanized

**Standards:**

UL 1242 C80.6

**Certification:**

UL



## Conduits

### Steel EMT Conduit



**Materials:**  
Hot dip Gavanized Steel  
**Standards:**  
UL797  
**Certification:**  
UL & CUL

Part No.	Size	Nominal Wt. (kg)	Nominal Outside Diameter (mm)	Thickness (mm)	Length (mm)
EMT050HG	1/2"	1.35	17.93	1.07	3050
EMT075HG	3/4"	2.07	23.42	1.25	3050
EMT100HG	1"	3.06	29.54	1.45	3050
EMT125HG	1-1/4"	4.56	38.35	1.65	3050
EMT150HG	1-1/2"	5.28	44.2	1.65	3050
EMT200HG	2"	6.72	55.8	1.65	3050
EMT250HG	2-1/2"	9.79	73.03	1.83	3050
EMT300HG	3"	12.00	88.9	1.83	3050
EMT350HG	3-1/2"	15.80	101.6	2.11	3050
EMT400HG	4"	17.80	114.3	2.11	3050

### Steel EMT Conduit



**Materials:**  
Pre Gavanized Steel  
**Standards:**  
UL797

Part No.	Size	Nominal Wt. (kg)	Nominal Outside Diameter (mm)	Thickness (mm)	Length (mm)
EMT050PG	1/2"	1.35	17.93	1.07	3050
EMT075PG	3/4"	2.07	23.42	1.25	3050
EMT100PG	1"	3.06	29.54	1.45	3050
EMT125PG	1-1/4"	4.56	38.35	1.65	3050
EMT150PG	1-1/2"	5.28	44.2	1.65	3050
EMT200PG	2"	6.72	55.8	1.65	3050
EMT250PG	2-1/2"	9.79	73.03	1.83	3050
EMT300PG	3"	12.00	88.9	1.83	3050
EMT350PG	3-1/2"	15.80	101.6	2.11	3050
EMT400PG	4"	17.80	114.3	2.11	3050

## Conduits

### Aluminum Rigid Conduit



**Materials:**  
Aluminum  
**Standards:**  
UL 6A & C22.2  
**Certification:**  
UL & CUL

Part No.	Size	Nominal Wt. (kg)	Nominal Outside Diameter (mm)	Wall Thickness (mm)	Length (mm)
ARCP050	1/2"	1.28	21.34	2.64	3050
ARCP075	3/4"	1.70	26.67	2.72	3050
ARCP100	1"	2.47	33.4	3.2	3050
ARCP125	1-1/4"	3.25	42.16	3.38	3050
ARCP150	1-1/2"	4.02	48.26	3.51	3050
ARCP200	2"	5.38	60.33	3.71	3050
ARCP250	2-1/2"	8.51	73.03	4.9	3050
ARCP300	3"	11.17	88.9	5.21	3050
ARCP350	3-1/2"	13.41	101.6	5.46	3050
ARCP400	4"	15.89	114.3	5.72	3050
ARCP500	5"	21.72	141.3	6.22	3050
ARCP600	6"	28.60	168.28	6.76	3050

### BS 4568 Steel Conduit



**Materials:**  
Galvanized steel  
**Standards:**  
BS4568

Part No.	Size (mm)	Thickness (mm)	Length (mm)	Weight (kg/pcs)
BS4568-20	20	1.6	3750	2.9
BS4568-25	25	1.6	3750	3.69
BS4568-32	32	1.6	3750	4.79
BS4568-40	40	1.6	3750	5.68
BS4568-50	50	1.6	3750	7.16

### BS 31 Steel Conduit



**Materials:**  
Galvanized steel  
**Standards:**  
BS31

Part No.	Size	Outsize Diameter (mm)	Thickness (mm)	Weight (kg/pcs)	Length (mm)
BS31-75	3/4"	18.9/19.05	1.6	2.65	3750
BS31-100	1"	25.25/25.4	1.6	3.62	3750
BS31-125	1-1/4"	31.6/31.75	1.6	4.59	3750
BS31-150	1-1/2"	38.1	1.65	5.47	3750
BS31-200	2"	50.8	1.65	7.49	3750

Galvanized steel strut channel-slotted



Part No.		Specification		
Steel Galvanized	Hot dip galvanized	Inch(″)	Metric (mm)	Thickness (mm)
GS41-15	HS41-15	1-5/8" x 1-5/8"	41 x 41	1.5
GS41-20	HS41-20			2.0
GS41-25	HS41-25			2.5
GS21-15	HS21-15	13/16" x 1-5/8"	41 x 21	1.5
GS21-20	HS21-20			2.0
GS21-25	HS21-25			2.5

Galvanized steel strut channel-plain

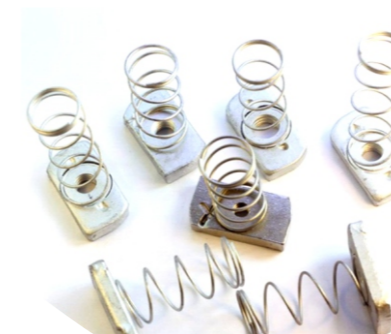


Part No.		Specification		
Steel Galvanized	Hot dip galvanized	Inch(″)	Metric (mm)	Thickness (mm)
GP41-15	HP41-15	1-5/8" x 1-5/8"	41 x 41	1.5
GP41-20	HP41-20			2.0
GP41-25	HP41-25			2.5
GP21-15	HP21-15	13/16" x 1-5/8"	41 x 21	1.5
GP21-20	HP21-20			2.0
GP21-25	HP21-25			2.5

Steel Thread Rod



Part No.	Specification
STR6-75	1/4"-20UNC X 6FT
STR6-95	3/8"-16UNC X 6FT
STR6-50	1/2"-13UNC X 6FT
STR10-75	1/4"-20UNC X 10FT
STR10-95	3/8"-16UNC X 10FT
STR10-50	1/2"-13UNC X 10FT



Spring Nut

Part No.	Specification
SN6	M6×34.5×19×6
SN8	M8×34.5×19×8
SN10	M10×34.5×19×9.2
SN12	M12×34.5×19×12
SN16	M16×34.5×19×28×12



Standard Stock — Coils

Part No.	Size (inches)	ID (inches)	OD (inches)	Length (feet)
ENT-050	1/2"	0.574	0.84	370
ENT-075	3/4"	0.778	1.050	240
ENT-100	1"	1.000	1.315	160
ENT-125	1-1/4"	1.340	1.660	500
ENT-150	1-1/2"	1.610	1.900	300
ENT-200	2"	2.020	2.375	225
ENT-250	2-1/2"	2.429	2.508	225

Features :

- Standard Stock — Coils, Trade Sizes ( 1/2"to 2-1/2")
  - UL recognizes the use of PVC Schedule 40 cement type fittings with all sizes of ENT
  - ENT ambient temperature range -4 deg F (installation) to 122 deg F
  - ENT rated for 90 deg C conductors
  - One piece ENT Coupling, Threaded Terminator and Schedule 40 Transition Fitting are rated concrete tight without tape by UL
  - Recognized in current NEC ref. Article 331
  - Recognized for use in 2-hour fire resistive nonload bearing and load bearing wall assemblies per NER-290
  - Recognized for use in 1-hour fire resistive nonload bearing wall assemblies per NER-290
  - Recognized for use in a fire resistive ceiling assembly (up to 3 hours) per NER-290
  - Recognized for Through-Penetration Firestop systems as classified by UL to meet BOCA, SBCCI and ICBO codes.
  - Nonconductive /noncorrosive pliable raceway system
  - Packaged in sticks, coils and reels
  - Available in three colors: Blue, Yellow and Red for color coding
  - Complete line of fittings & accessories specifically designed for use with ENT.
  - Hand bendable - does not require special tools
  - Easy to cut length needed for installation - reduces scraps.
  - Conductors easily push through the raceway (up to approximately 50 feet)
  - Lightweight makes it easy to handle on the jobs.
- \*Speed of installation keeps the job on schedule despite unexpected obstacles. Lower installation costs allow for savings to be reallocated to upgrade other areas, such as; lighting, dimming, etc.



Standard Stock — Reels

Part No.	Size (inches)	ID (inches)	OD (inches)	Length (feet)
ENT-050	1/2"	0.574	0.84	1500
ENT-075	3/4"	0.778	1.050	1000
ENT-100	1"	1.000	1.315	750
ENT-125	1-1/4"	1.340	1.660	750
ENT-150	1-1/2"	1.610	1.900	500
ENT-200	2"	2.020	2.375	325
ENT-250	2-1/2"	2.429	2.508	325

Features :

- Standard Stock — Reels, Trade Sizes (1/2"to 2-1/2")
  - UL recognizes the use of PVC Schedule 40 cement type fittings with all sizes of ENT
  - ENT ambient temperature range -4 deg F (installation) to 122 deg F
  - ENT rated for 90 deg C conductors
  - One piece ENT Coupling, Threaded Terminator and Schedule 40 Transition Fitting are rated concrete tight without tape by UL
  - Recognized in current NEC ref. Article 331
  - Recognized for use in 2-hour fire resistive nonload bearing and load bearing wall assemblies per NER-290
  - Recognized for use in 1-hour fire resistive nonload bearing wall assemblies per NER-290
  - Recognized for use in a fire resistive ceiling assembly (up to 3 hours) per NER-290
  - Recognized for Through-Penetration Firestop systems as classified by UL to meet BOCA, SBCCI and ICBO codes.
  - Nonconductive /noncorrosive pliable raceway system
  - Packaged in sticks, coils and reels
  - Available in three colors: Blue, Yellow and Red for color coding
  - Complete line of fittings & accessories specifically designed for use with ENT.
  - Hand bendable - does not require special tools
  - Easy to cut length needed for installation - reduces scraps.
  - Conductors easily push through the raceway (up to approximately 50 feet)
  - Lightweight makes it easy to handle on the jobs.
- \*Speed of installation keeps the job on schedule despite unexpected obstacles. Lower installation costs allow for savings to be reallocated to upgrade other areas, such as; lighting, dimming, etc.



## Flexible Conduits



- 3/8" thru 2" trade size
- Use with straight or right angle connectors
- May also be used with metallic connectors for liquid-tight conduit
- Resists corrosion, abrasion, oil, water, acid, metal shavings, & rough environments
- Resists abuse, pull & crushing
- UL Rating: 80°C dry, 60°C wet, 80°C oil resistant
- Outdoor, sunlight resistant, direct burial
- CSA rating - 18°C to 75°C
- Smooth inside for easier wire pulling, no hazardous sharp edges or burrs, will not damage conductors
- Light weight & lower installed cost
- Quick installation, cuts with utility knife or PVC cutter

### Nonmetallic Liquid Tight Conduit

Part No.	Size	Std. Pkg.	Weight Per Pkg.	Dimensions (inches)	
				O.D. Min.-Max.	I.D. Min.-Max.
NLT-38	3/8"	100	9	0.69-0.71	0.484-0.504
NLT-50	1/2"	100	10	0.82-0.84	0.622-0.642
NLT-75	3/4"	100	14	1.030-1.050	0.820-0.840
NLT-100	1"	100	19	1.290-1.315	1.041-1.066
NLT-125	1-1/4"	100	22	1.630-1.660	1.380-1.410
NLT-150	1-1/2"	50	14	1.865-1.900	1.575-1.600
NLT-200	2"	50	21	2.340-2.375	2.020-2.045

## Flexible Conduits



### Liquid Tight Steel Flexible Conduit

#### Use:

Liquid Tight Steel Flexible Conduit manufactured using galvanized steel is resistant to oil and grease. Helically wound flexible conduit is available with smooth wipe clean outer cover or PVC cover, this make them UV resistant and can be used for external use. We offer these conduits in various colors such as black, grey, & orange, and also in customized forms as required by clients.

#### Specifications:

Working temperature: Min - 20° C Max + 105° C  
IP rating: IP66 + IP67+ IP68 (5 bar)

#### Features :

Flexible construction  
Corrosion resistance  
Smooth interior for easy wire pull-through  
Flexibility in an economic design  
High mechanical strength

#### Specification :

Part No.	Size	Internal Diameter		External Diameter		Min Bend Radius	Coil Packing
		(mm)		(mm)			
		Min.	Max.	Min.	Max.		
GFC-701	3/8"	12.3	12.8	17.5	18	50	50
GFC-702	1/2"	15.8	16.3	20.8	21.3	65	50
GFC-703	3/4"	20.7	21.2	26.2	26.7	75	50
GFC-704	1"	26.4	26.8	32.7	33.4	100	50
GFC-705	1 1/4"	35.5	35.4	41.4	42.2	120	25
GFC-706	1 1/2"	40.1	40.6	47.4	48.3	140	25
GFC-707	2"	51.3	51.9	59.4	60.3	180	25
GFC-708	2 1/2"	63	63.6	72.1	73	240	10
GFC-709	3"	78	78.7	87.9	88.9	300	10
GFC-710	4"	101.6	102.6	113.2	114.3	350	10



PVC Coated Steel Flexible Conduit

**Use:**

We are engaged in manufacturing and exporting a quality range of PVC Coated Steel Flexible Conduit. Our conduits are used for mechanical protection of cable and wire in tunnels, hospitals, high-rise office blocks and public buildings, airlines, underground and others. Further, these are PVC coated in order to ensure resistance against corrosion. These steel flexible conduits are most suitable for tight-spot installation and in places where certain water tightness is required. Galvanized steel, helical wound, flexible steel conduit is available in poly vinyl coating in black color with spiral corrugated pattern finished surface.

**Technical data:**

IP rating: IP54 with standard fittings  
 IP65 with type C compression fittings  
 Halogen, sulphur and phosphorus free  
 Temperature range: -25°C to +90°C  
 Nickel plated brass fittings

**Specification :**

Part No.	Size	Internal Diameter	External Diameter	Min. Bend Radius	Coil Packing
		Min. / Max. (mm)	Min. / Max. (mm)		
GFC-401	3/8"	12.3/12.8	16.7/17.2	36	50
GFC-402	1/2"	15.8/16.3	20.2/20.7	50	50
GFC-403	3/4"	20.7/21.2	25.5/26.1	55	50
GFC-404	1"	26.4/26.8	31.6/32.2	65	50
GFC-405	1 1/4"	35.05/35.4	40.8/41.5	75	50
GFC-406	1 1/2"	40.0/40.6	46.6/47.2	86	25
GFC-407	2"	51.3/51.9	58.1/58.7	105	25
GFC-408	2 1/2"	63.0/63.6	71.8/72.4	160	15
GFC-409	3"	78.0/78.7	87.2/87.9	180	10
GFC-410	4"	101.6/102.6	111.2/112.3	210	10



Metal Clad Armor Cable MC (BX)

**Application:**

Type MC cables are suitable for use as follows: branch, feeder and service power distribution in commercial, industrial, institutional, and multi-residential buildings. Power, lighting, control, and signal circuits. Type THHN/THWN conductors are rated 90°C dry / 75°C wet. They are permitted for 600V application.

**Conductors:** Soft annealed copper .

**Sizes:** 14AWG-1000kcmil.

**Insulation:** Flame retardant PVC.

**Thickness:** per UL83.

Part No.	Size	Strands No./OD (MM)	PVC insulation Thickness (MM)	Nylon Jacket Thickness (MM)	AL interlocked Tape thickness (MM)	Approx. O.D (MM)	Max.DC Resistance (20°C, Ω/km)	Approx. Weight (kg/km)
	AWG							
CA-142	14/2+14/1	1/1.63	0.38	0.2	0.5	11.6	8.45	141.54
CA-143	14/3+14/1	1/1.63	0.38	0.2	0.5	12.3	8.45	170.75
CA-144	14/4+14/1	1/1.63	0.38	0.2	0.5	13.1	8.45	200.36
CA-122	12/2+12/1	1/2.05	0.38	0.2	0.5	11.9	5.31	191.7
CA-123	12/3+12/1	1/2.05	0.38	0.2	0.5	12.7	5.31	234.4
CA-124	12/4+12/1	1/2.05	0.38	0.2	0.5	13.6	5.31	277.7
CA-102	10/2+10/1	1/2.59	0.51	0.2	0.5	13.6	3.34	268.7
CA-103	10/3+10/1	1/2.59	0.51	0.2	0.5	14.7	3.34	334.4
CA-104	10/4+10/1	1/2.59	0.51	0.2	0.5	15.8	3.34	401.1
CA-82	8/2+10/1	7/1.24 7/0.98	0.76 0.51	0.22 0.2	0.5	17.1	2.14 3.34	364.6
CA-83	8/3+10/1	7/1.24 7/0.98	0.76 0.51	0.22 0.2	0.5	17.9	2.14 3.34	476
CA-84	8/4+10/1	7/1.24 7/0.98	0.76 0.51	0.22 0.2	0.6	19.1	2.14 3.34	607.6
CA-62	6/2+10/1	7/1.56 7/1.24	0.76 0.76	0.22 0.22	0.6	18.9	1.35 2.14	521.5
CA-63	6/3+10/1	7/1.56 7/1.24	0.76 0.76	0.22 0.22	0.6	19.9	1.35 2.14	700.5
CA-64	6/4+10/1	7/1.56 7/1.24	0.76 0.76	0.22 0.22	0.6	21.9	1.35 2.14	863.3
CA-42	4/2+8/1	7/1.96 7/1.24	1.02/0.76	0.22	0.6	24.3	0.85 2.14	723
CA-43	4/3+8/1	7/1.96 7/1.24	1.02/0.76	0.22	0.6	27.5	0.85 2.14	1023.8
CA-44	4/4+8/1	7/1.96 7/1.24	1.02/0.76	0.22	0.6	28.9	0.85 2.14	1284.5
CA-32	3/2+6/1	7/2.2 7/1.56	1.02/0.76	0.22	0.6	25.7	0.673 1.35	944.6
CA-33	3/3+6/1	7/2.2 7/1.56	1.02/0.76	0.22	0.6	28	0.673 1.35	1258.4
CA-34	3/4+6/1	7/2.2 7/1.56	1.02/0.76	0.22	0.6	30.6	0.53 1.35	1575.8
CA-22	2/2+6/1	7/2.47 7/1.56	1.02/0.76	0.22	0.6	27.5	0.53 1.35	1097.8



### Galvanized Steel Flexible Conduit

**Products:**

We provide a comprehensive range of Galvanized Steel Flexible Conduit, which is designed in order to provide mechanical strength and higher flexibility. These helically wound flexible conduits in galvanized steel are appreciated for features such as corrosion resistance, durability, and high functional life. We offer these conduits in natural as well as in zinc finish.

**Features:**

- High mechanical strength
- Highly flexible
- Temperature range: -100°C to +300°C
- IP rating: IP40 with standard fittings
- Inherent low fire hazard product

**Specification :**

Part No.	Size	Internal Diameter (mm)	External Diameter (mm)	Min. Bend Radius (mm)	Coil Packing (m)
GFC-201	3/8"	10	13	30	50
GFC-202	5/8"	16	19	30	50
GFC-203	1/2"	13	17	43	50
GFC-204	3/4"	19	23	50	50
GFC-205	1"	25	29	57	50
GFC-206	1 1/4"	32	36	70	50
GFC-207	1 1/2"	38	43	80	25
GFC-208	2"	50	55	95	25
GFC-209	2 1/2"	63	70	140	15
GFC-210	3"	78	85	150	10
GFC-211	4"	101	109	190	10



### Green Field Flexible Conduit

**Use:**

Greenfield Flexible Conduit using hot dipped galvanized steel strips of heavy thickness. These are made using helical winding of cold rolled annealed pinch passed hot dipped galvanized steel strip. Fabricated in round lock construction, Greenfield Flexible Conduit is used where high corrosion resistance and long life for the conduit is required.

**Features :**

- Highly resistant to corrosion
- Long service life
- Good mechanical protection
- Medium bending flexibility
- Inherent low fire hazard
- Resistant to high temperature +300°C
- Operate efficiently in broad temperature range
- Can bear strong tension

**Specification**

Part No.	Size	I.D. (MM)	O.D. (MM)	COIL LENGTH (M)
GFC-301	1/2"	16.5	22	30
GFC-302	3/4"	20.5	26	30
GFC-303	1"	25.5	33	30
GFC-304	1-1/4"	32	39.5	15
GFC-305	1-1/2"	38	47	15
GFC-306	2"	51	60	15
GFC-307	2-1/2"	63	70	10
GFC-308	3"	76	82	10
GFC-309	3-1/2"	90	98	10
GFC-310	4"	100	108	10





PVC Coated flexible conduit with SS wire braided

**Protection rating:** Ip65  
**Working temperature:** -20°C~90°C  
**Core:** Galvanized steel/stainless steel  
**Mid:** PVC  
**Jacket:** stainless steel mesh  
**Compression strength (20mm):** 4800N at 10% permanent deformation over 50mm length  
**Pull off strength of conduit (20mm):** 1700N

Specification chart:

Part No.	Normal Size		O.D (mm)	I.D (mm)	Bending Radius (mm)	Packing (m/roll)
	Inch	Latus Rectum (mm)				
PFSS-050	1/2"	F 15	21.15-21.45	14.80-16.00	90	50
PFSS-075	3/4"	F 20	25.95-26.25	19.00-20.00	110	50
PFSS-100	1"	F 25	31.35-31.85	24.50-25.00	150	50
PFSS-125	1-1/4"	F 32	39.15-39.65	31.50-32.50	175	25
PFSS-150	1-1/2"	F 38	46.35-46.85	37.50-38.50	200	25
PFSS-200	2"	F 51	59.45-59.95	49.50-50.50	230	20
PFSS-250	2-1/2"	F 64	74.15-74.65	62.5-65.0	250	10
PFSS-300	3"	F 75	85.15-85.85	73.0-76.0	300	10
PFSS-400	4"	F 100	110.15-111.15	97.0-103.0	500	5

Steel EMT Elbows



**Use:**  
 90° EMT elbows are used to connect steel EMT Conduit together to allow for 90° bends  
**Materials:**  
 Hot Dip Galvanized Steel  
**Certification:**  
 UL/CUL  
**Other degrees:**  
 22.5°;30°;60° available

90° EMT Elbow

Part No.	Size
EMT-9050EL	1/2"
EMT-9075EL	3/4"
EMT-9100EL	1"
EMT-9125EL	1-1/4"
EMT-9150EL	1-1/2"
EMT-9200EL	2"
EMT-9250EL	2-1/2"
EMT-9300EL	3"
EMT-9350EL	3-1/2"
EMT-9400EL	4"



**Use:**  
 45° EMT elbows are used to connect steel EMT Conduit together to allow for 45° bends  
**Materials:**  
 Hot Dip Galvanized Steel  
**Certification:**  
 UL/CUL  
**Other degrees:**  
 22.5°;30°;60° available

45° EMT Elbow

Part No.	Size
EMT-4050EL	1/2"
EMT-4075EL	3/4"
EMT-4100EL	1"
EMT-4125EL	1-1/4"
EMT-4150EL	1-1/2"
EMT-4200EL	2"
EMT-4250EL	2-1/2"
EMT-4300EL	3"
EMT-4350EL	3-1/2"
EMT-4400EL	4"

Steel IMC Elbows



**Use:**  
90° IMC elbows are used to connect steel IMC Conduit together to allow for 90° bends

**Materials:**  
Hot Dip Galvanized Steel

**Certification:**  
UL/CUL

90° IMC Elbow

Part No.	Size
IMC-9050EL	1/2"
IMC-9075EL	3/4"
IMC-9100EL	1"
IMC-9125EL	1-1/4"
IMC-9150EL	1-1/2"
IMC-9200EL	2"
IMC-9250EL	2-1/2"
IMC-9300EL	3"
IMC-9350EL	3-1/2"
IMC-9400EL	4"



**Use:**  
45° IMC elbows are used to connect steel IMC Conduit together to allow for 45° bends

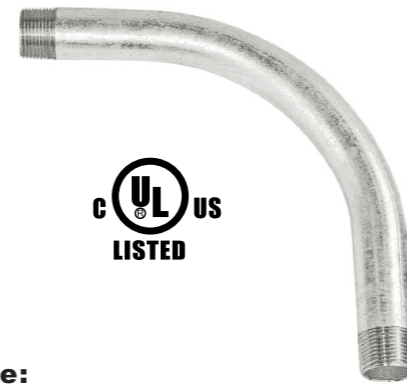
**Materials:**  
Hot Dip Galvanized Steel

**Certification:**  
UL/CUL

45° IMC Elbow

Part No.	Size
IMC-4050EL	1/2"
IMC-4075EL	3/4"
IMC-4100EL	1"
IMC-4125EL	1-1/4"
IMC-4150EL	1-1/2"
IMC-4200EL	2"
IMC-4250EL	2-1/2"
IMC-4300EL	3"
IMC-4350EL	3-1/2"
IMC-4400EL	4"

Steel RSC Elbows



**Use:**  
90° Rigid elbows are used to connect steel Rigid Conduit together to allow for 90° bends

**Materials:**  
Hot Dip Galvanized Steel

**Certification:**  
UL/CUL

**Other degrees:**  
22.5°;30°;60° available

90° Rigid Elbow

Part No.	Size
RSC-9050EL	1/2"
RSC-9075EL	3/4"
RSC-9100EL	1"
RSC-9125EL	1-1/4"
RSC-9150EL	1-1/2"
RSC-9200EL	2"
RSC-9250EL	2-1/2"
RSC-9300EL	3"
RSC-9350EL	3-1/2"
RSC-9400EL	4"



**Use:**  
45° Rigid elbows are used to connect steel Rigid Conduit together to allow for 45° bends.

**Materials:**  
Hot Dip Galvanized Steel

**Certification:**  
UL/CUL

**Other degrees:**  
22.5°;30°;60° available

45° Rigid Elbow

Part No.	Size
RSC-4050EL	1/2"
RSC-4075EL	3/4"
RSC-4100EL	1"
RSC-4125EL	1-1/4"
RSC-4150EL	1-1/2"
RSC-4200EL	2"
RSC-4250EL	2-1/2"
RSC-4300EL	3"
RSC-4350EL	3-1/2"
RSC-4400EL	4"

Aluminum Rigid Elbows



**Use:**  
90° Rigid elbows are used to connect aluminum Rigid Conduit together to allow for 90° bends

**Materials:**  
Aluminum

**Certification:**  
UL/CUL

90° Rigid Elbow

Part No.	Size
ARC-9050EL	1/2"
ARC-9075EL	3/4"
ARC-9100EL	1"
ARC-9125EL	1-1/4"
ARC-9150EL	1-1/2"
ARC-9200EL	2"
ARC-9250EL	2-1/2"
ARC-9300EL	3"
ARC-9350EL	3-1/2"
ARC-9400EL	4"



**Use:**  
45° Rigid elbows are used to connect aluminum Rigid Conduit together to allow for 45° bends

**Materials:**  
Aluminum

**Certification:**  
UL/CUL

45° Rigid Elbow

Part No.	Size
ARC-4050EL	1/2"
ARC-4075EL	3/4"
ARC-4100EL	1"
ARC-4125EL	1-1/4"
ARC-4150EL	1-1/2"
ARC-4200EL	2"
ARC-4250EL	2-1/2"
ARC-4300EL	3"
ARC-4350EL	3-1/2"
ARC-4400EL	4"



**Use:**  
Threaded couplings are used to join two lengths of threaded Rigid Conduit.

**Materials:**  
Hot Dip Galvanized Steel

**Standard:**  
UL 6 & CSA C22.2 NO. 45.1-07

**Certification:**  
UL/CUL

Steel Rigid Coupling

Part No.	Size
RSC-050CP	1/2"
RSC-075CP	3/4"
RSC-100CP	1"
RSC-125CP	1-1/4"
RSC-150CP	1-1/2"
RSC-200CP	2"
RSC-250CP	2-1/2"
RSC-300CP	3"
RSC-350CP	3-1/2"
RSC-400CP	4"



**Use:**  
Threaded couplings are used to join two lengths of threaded IMC conduit.

**Materials:**  
Hot Dip Galvanized Steel

**Standard:**  
UL1242

**Certification:**  
UL/CUL

Steel IMC Coupling

Part No.	Size
IMC-050CP	1/2"
IMC-075CP	3/4"
IMC-100CP	1"
IMC-125CP	1-1/4"
IMC-150CP	1-1/2"
IMC-200CP	2"
IMC-250CP	2-1/2"
IMC-300CP	3"
IMC-350CP	3-1/2"
IMC-400CP	4"



**Use:**  
Threaded couplings are used to join two lengths of threaded aluminum rigid conduit.

**Materials:**  
Aluminum

**Standard:**  
UL 6A & C22.2 No. 45.2-08

**Certification:**  
UL/CUL

Aluminum Rigid Coupling

Part No.	Size
ARC-050CP	1/2"
ARC-075CP	3/4"
ARC-100CP	1"
ARC-125CP	1-1/4"
ARC-150CP	1-1/2"
ARC-200CP	2"
ARC-250CP	2-1/2"
ARC-300CP	3"
ARC-350CP	3-1/2"
ARC-400CP	4"





Malleable Combination Coupling

Part No.	Size
MCCP-050	1/2 "
MCCP-075	3/4 "
MCCP-100	1 "
MCCP-125	1-1/4 "

**Use:**  
Combination couplings are used to provide a transition from steel EMT conduit to Flexible Metal Conduit.

**Materials :**

Malleable iron

**Certification:**

UL/CUL



Malleable Expansion Coupling

Part No.	Size
AX-050	1/2 "
AX-075	3/4 "
AX-100	1 "
AX-125	1-1/4 "
AX-150	1-1/2 "
AX-200	2 "
AX-250	2-1/2 "
AX-300	3 "
AX-350	3-1/2 "
AX-400	4 "

**Use:**  
Malleable Iron expansion couplings provide for movement that takes place on long runs of conduit installed in buildings of great length and between divisions of buildings that are sectioned apart by structural expansion joints.

**Materials:**

Malleable Iron

**Certification:**

UL/CUL



Malleable Split Coupling

Part No.	Size
SCC-050	1/2 "
SCC-075	3/4 "
SCC-100	1 "
SCC-125	1 1/4 "
SCC-150	1 1/2 "
SCC-200	2 "
SCC-250	2 1/2 "
SCC-300	3 "
SCC-350	3 1/2 "
SCC-400	4 "
SCC-500	5 "

**Use:**  
Malleable Iron Split Coupling  
A neoprene gasket provides a concrete tight seal at the joint  
Use where conduit runs are closely spaced  
Use where conduit is tight against wall, ceiling or other obstruction  
Use where conduit cannot be turned

**Materials:**

Malleable Iron



Malleable Three Piece Coupling

Part No.	Size
3PCPL-050	1/2 "
3PCPL-075	3/4 "
3PCPL-100	1 "
3PCPL-125	1-1/4 "
3PCPL-150	1-1/2 "
3PCPL-200	2 "
3PCPL-250	2-1/2 "
3PCPL-300	3 "
3PCPL-350	3-1/2 "
3PCPL-400	4 "
3PCPL-500	5 "
3PCPL-600	6 "

**Use:**  
Malleable Iron 3-PC Coupling  
Three piece couplings are used to connect threaded rigid or IMC conduits that are not able to be turned.  
Three piece couplings provide concrete tight connections.  
Three piece couplings are zinc electroplated for excellent corrosion protection in damp locations.  
Advantages: Heavy-gauge steel construction maintains mechanical protection and solid grounding of one conduit to another.  
Three-piece couplings are zinc electroplated for excellent corrosion protection in damp location.

**Materials:**

Malleable Iron

**Certification:**

UL/CUL

# Conduit Nipple

## Steel Rigid Conduit Nipple



Part No.	Size	Part No.	Size	Part No.	Size	Part No.	Size
SRN50C	1/2" X CLOSE	SRN100-450	1"X4-1/2"	SRN150-1100	1-1/2"X11"	SRN300-600	3" X 6"
SRN50-150	1/2" X 1-1/2"	SRN100-500	1"X5"	SRN150-1200	1-1/2" X 12"	SRN300-700	3"X7"
SRN50-200	1/2" X 2"	SRN100-550	1"X5-1/2"	SRN150-1800	1-1/2" X 18"	SRN300-800	3" X 8"
SRN50-250	1/2"X2-1/2"	SRN100-600	1"X6"	SRN150-2400	1-1/2" X 24"	SRN300-900	3"X9"
SRN50-300	1/2"X3"	SRN100-700	1"X7"	SRN200C	2" X CLOSE	SRN300-1000	3" X 10"
SRN50-350	1/2"X3-1/2"	SRN100-800	1"X8"	SRN200-250	2"X2-1/2"	SRN300-1100	3"X11"
SRN50-400	1/2" X 4"	SRN100-900	1"X9"	SRN200-300	2" X 3"	SRN300-1200	3" X 12"
SRN50-450	1/2"X4-1/2"	SRN100-1000	1"X10"	SRN200-350	2"X3-1/2"	SRN300-1600	3" X 16"
SRN50-500	1/2" X 5"	SRN100-1100	1"X11"	SRN200-400	2" X 4"	SRN300-1800	3" X 18"
SRN50-550	1/2"X5-1/2"	SRN100-1200	1"X12"	SRN200-450	2"X4-1/2"	SRN300-2400	3" X 24"
SRN50-600	1/2" X 6"	SRN100-1800	1"X18"	SRN200-500	2"X5"	SRN350C	3-1/2" X CLOSE
SRN50-700	1/2"X7"	SRN100-2400	1"X24"	SRN200-550	2"X5-1/2"	SRN350-300	3-1/2"X3"
SRN50-800	1/2" X 8"	SRN125C	1-1/4"X CLOSE	SRN200-600	2" X 6"	SRN350-350	3-1/2"X3-1/2"
SRN50-900	1/2"X9"	SRN125-200	1-1/4"X2"	SRN200-700	2"X7"	SRN350-400	3-1/2"X4"
SRN50-1000	1/2" X 10"	SRN125-250	1-1/4"X2-1/2"	SRN200-800	2" X 8"	SRN350-450	3-1/2"X4-1/2"
SRN50-1100	1/2"X11"	SRN125-300	1-1/4"X3"	SRN200-900	2"X9"	SRN350-500	3-1/2"X5"
SRN50-1200	1/2" X 12"	SRN125-350	1-1/4"X3-1/2"	SRN200-1000	2" X 10"	SRN350-550	3-1/2"X5-1/2"
SRN50-1800	1/2" X 18"	SRN125-400	1-1/4"X4"	SRN200-1100	2"X11"	SRN350-600	3-1/2"X6"
SRN50-2400	1/2"X24"	SRN125-450	1-1/4"X4-1/2"	SRN200-1200	2" X 12"	SRN350-700	3-1/2"X7"
SRN75C	3/4" X CLOSE	SRN125-500	1-1/4"X5"	SRN200-1800	2" X 18"	SRN350-800	3-1/2"X8"
SRN75-150	3/4"X1-1/2"	SRN125-550	1-1/4"X5-1/2"	SRN200-2400	2" X 24"	SRN350-900	3-1/2"X9"
SRN75-200	3/4"X2"	SRN125-600	1-1/4"X6"	SRN250C	2-1/2" X CLOSE	SRN350-1000	3-1/2"X10"
SRN75-250	3/4"X2-1/2"	SRN125-700	1-1/4"X7"	SRN250-300	2-1/2"X3"	SRN350-1100	3-1/2"X11"
SRN75-300	3/4" X 3"	SRN125-800	1-1/4"X8"	SRN250-350	2-1/2"X3-1/2"	SRN350-1200	3-1/2" X 12"
SRN75-350	3/4"X3-1/2"	SRN125-900	1-1/4"X9"	SRN250-400	2-1/2"X4"	SRN350-1800	3-1/2"X18"
SRN75-400	3/4" X 4"	SRN125-1000	1-1/4"X10"	SRN250-450	2-1/2"X4-1/2"	SRN350-2400	3-1/2"X24"
SRN75-450	3/4"X4-1/2"	SRN125-1100	1-1/4"X11"	SRN250-500	2-1/2"X5"	SRN400C	4" X CLOSE
SRN75-500	3/4"X5"	SRN125-1200	1-1/4" X12"	SRN250-550	2-1/2"X5-1/2"	SRN400-400	4" X 4"
SRN75-550	3/4"X5-1/2"	SRN125-1800	1-1/4" X18"	SRN250-600	2-1/2"X6"	SRN400-450	4"X4-1/2"
SRN75-600	3/4"X6"	SRN125-2400	1-1/4" X24"	SRN250-700	2-1/2"X7"	SRN400-500	4" X 5"
SRN75-700	3/4"X7"	SRN150C	1-1/2" X CLOSE	SRN250-800	2-1/2" X 8"	SRN400-550	4"X5-1/2"
SRN75-800	3/4"X8"	SRN150-200	1-1/2"X2"	SRN250-900	2-1/2"X9"	SRN400-600	4" X 6"
SRN75-900	3/4"X9"	SRN150-250	1-1/2"X2-1/2"	SRN250-1000	2-1/2"X10"	SRN400-700	4"X7"
SRN75-1000	3/4"X10"	SRN150-300	1-1/2"X3"	SRN250-1100	2-1/2"X11"	SRN400-800	4" X 8"
SRN75-1100	3/4"X11"	SRN150-350	1-1/2"X3-1/2"	SRN250-1200	2-1/2" X 12"	SRN400-900	4"X9"
SRN75-1200	3/4" X 12"	SRN150-400	1-1/2"X4"	SRN250-1800	2-1/2" X 18"	SRN400-1000	4" X 10"
SRN75-1800	3/4" X 18"	SRN150-450	1-1/2"X4-1/2"	SRN250-2400	2-1/2" X 24"	SRN400-1100	4"X11"
SRN75-2400	3/4" X 24"	SRN150-500	1-1/2"X5"	SRN300C	3" X CLOSE	SRN400-1200	4" X 12"
SRN100C	1"X CLOSE	SRN150-550	1-1/2"X5-1/2"	SRN300-300	3"X3"	SRN400-1800	4"X18"
SRN100-200	1"X2"	SRN150-600	1-1/2" X 6"	SRN300-350	3"X3-1/2"	SRN400-2400	4"X24"
SRN100-250	1"X2-1/2"	SRN150-700	1-1/2"X7"	SRN300-400	3" X 4"	SPN400-3600	4"X36"
SRN100-300	1" X 3"	SRN150-800	1-1/2" X 8"	SRN300-450	3"X4-1/2"	/	/
SRN100-350	1"X3-1/2"	SRN150-900	1-1/2"X9"	SRN300-500	3"X5"	/	/
SRN100-400	1"X4"	SRN150-1000	1-1/2"X10"	SRN300-550	3"X5-1/2"	/	/

**Use:**

Threaded nipples are used to extend a length of threaded Rigid or IMC Conduit according to the pipe size and length desired. May also be used to connect two steel outlet boxes or metal enclosures together.

**Materials :**

Hot Dip Galvanized Steel

**Certification:**

UL/CUL



Superior Electrical Products LLC

# Conduit Nipple

## Aluminum Rigid Conduit Nipple



Part No.	Size	Part No.	Size	Part No.	Size
ARN50C	1/2"X CLOSE	ARN125-250	1-1/4"X2-1/2"	ARN250-1000	2-1/2" *10"
ARN50-150	1/2"X1-1/2"	ARN125-300	1-1/4"X3"	ARN250-1200	2-1/2" *12"
ARN50-200	1/2"X2"	ARN125-350	1-1/4"X3-1/2"	ARN300C	3" X CLOSE
ARN50-250	1/2"X2-1/2"	ARN125-400	1-1/4"X4"	ARN300-300	3"X3"
ARN50-300	1/2"X3"	ARN125-500	1-1/4"X5"	ARN300-350	3"X3-1/2"
ARN50-350	1/2"X3-1/2"	ARN125-600	1-1/4"X6"	ARN300-400	3"X4"
ARN50-400	1/2"X4"	ARN125-800	1-1/4"X8"	ARN300-500	3"X5"
ARN50-500	1/2"X5"	ARN125-1000	1-1/4"X10"	ARN300-600	3"X6"
ARN50-600	1/2"X6"	ARN125-1200	1-1/4"X12"	ARN300-800	3"X8"
ARN50-800	1/2"X8"	ARN150C	1-1/2"XCLOSE	ARN300-1000	3"X10"
ARN50-1000	1/2"X10"	ARN150-200	1-1/2"X2"	ARN300-1200	3"X12"
ARN50-1200	1/2"X12"	ARN150-250	1-1/2"X2-1/2"	ARN350C	3-1/2" X CLOSE
ARN75C	3/4" X CLOSE	ARN150-300	1-1/2"X3"	ARN350-400	3-1/2"X4"
ARN75-150	3/4"X1-1/2"	ARN150-350	1-1/2"X3-1/2"	ARN350-500	3-1/2"X5"
ARN75-200	3/4"X2"	ARN150-400	1-1/2"X4"	ARN350-600	3-1/2"X6"
ARN75-250	3/4"X2-1/2"	ARN150-500	1-1/2"X5"	ARN350-800	3-1/2"X8"
ARN75-300	3/4"X3"	ARN150-600	1-1/2"X6"	ARN350-1000	3-1/2"X10"
ARN75-350	3/4"X3-1/2"	ARN150-800	1-1/2"X8"	ARN350-1200	3-1/2"X12"
ARN75-400	3/4"X4"	ARN150-1000	1-1/2"X10"	ARN400C	4" X CLOSE
ARN75-500	3/4"X5"	ARN150-1200	1-1/2"X12"	ARN400-400	4"X4"
ARN75-600	3/4"X6"	ARN200C	2" X CLOSE	ARN400-500	4"X5"
ARN75-800	3/4"X8"	ARN200-250	2"X2-1/2"	ARN400-600	4"X6"
ARN75-1000	3/4"X10"	ARN200-300	2"X3"	ARN400-800	4"X8"
ARN75-1200	3/4"X12"	ARN200-350	2"X3-1/2"	ARN400-1000	4"X10"
ARN100C	1" X CLOSE	ARN200-400	2"X4"	ARN400-1200	4"X12"
ARN100-200	1"X2"	ARN200-500	2"X5"	ARN500C	5" X CLOSE
ARN100-250	1"X2-1/2"	ARN200-600	2"X6"	ARN500-500	5"X5"
ARN100-300	1"X3"	ARN200-800	2"X8"	ARN500-600	5"X6"
ARN100-350	1"X3-1/2"	ARN200-1000	2"X10"	ARN500-800	5"X8"
ARN100-400	1"X4"	ARN200-1200	2"X12"	ARN500-1000	5"X10"
ARN100-500	1"X5"	ARN250C	2-1/2" X CLOSE	ARN500-1200	5"X12"
ARN100-600	1"X6"	ARN250-300	2-1/2" X3"	ARN600C	6" X CLOSE
ARN100-800	1"X8"	ARN250-350	2-1/2" X3-1/2"	ARN600-500	6"X5"
ARN100-1000	1"X10"	ARN250-400	2-1/2" X4"	ARN600-600	6"X6"
ARN100-1200	1"X12"	ARN250-500	2-1/2" X5"	ARN600-800	6"X8"
ARN125C	1-1/4" X CLOSE	ARN250-600	2-1/2" X6"	ARN600-1000	6"X10"
ARN125-200	1-1/4"X2"	ARN250-800	2-1/2" X8"	/	/

**Use:**

Threaded nipples are used to extend a length of threaded Rigid or IMC Conduit according to the pipe size and length desired. May also be used to connect two steel outlet boxes or metal enclosures together.

**Materials :**

Aluminum

**Certification:**

UL/CUL



Superior Electrical Products LLC



Malleable Offset Conduit Nipple

Part No.	Size
MON-050	1/2"
MON-075	3/4"
MON-100	1"
MON-125	1-1/4"

**Use :**

Offset nipples are used to provide an offset connection between two outlet boxes or metal enclosures.

**Materials :** Malleale iron

**Standards :**UL 514B



Zinc Conduit Chase Nipple

Part No	Size
ZCCN-050	1/2"
ZCCN-075	3/4"
ZCCN-100	1"
ZCCN-125	1-1/4"
ZCCN-150	1-1/2"
ZCCN-200	2"
ZCCN-250	2-1/2"
ZCCN-300	3"
ZCCN-350	3-1/2"
ZCCN-400	4"

**Use:**

Use to connect two steel outlet boxes or other metal enclosures or to extend a length of threaded Rigid or IMC conduit.

**Materials :**Zinc die cast

**Standards :**UL 514B



Conduit Whip-Plastic Connector

Part No.	Size
NMW-504	1/2" x 4'
NMW-506	1/2" x 6'
NMW-754	3/4" x 4'
NMW-756	3/4" x 6'



Conduit Whip-Metallic Connector

Part No.	Size
MW-504	1/2" x 4'
MW-506	1/2" x 6'
MW-754	3/4" x 4'
MW-756	3/4" x 6'

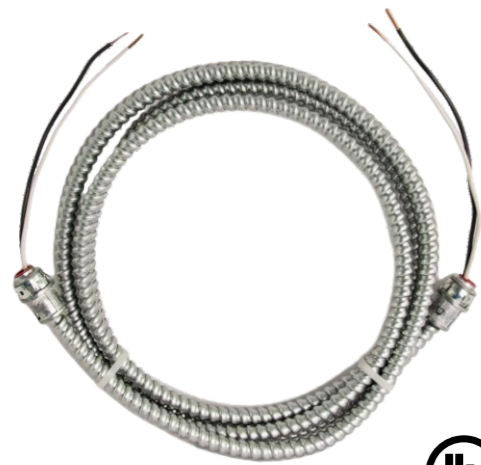
**Conduit whip**

Liquid tight Conduit  
 Connecting Wires (Red, Black & Green #10)  
 One Straight Connector & One 90 Degree Connector  
 Two 3/4"-1/2" Reducing Washers  
 UL Approved Wire-Non-Metallic Connectors,  
 Whip-Pre-Assembled, Conduit Kit, Liquid Tight Hook-Up Whip

**Applications**  
 Air condition unit hook up  
 Heat pumps  
 Pools  
 Spas  
 Outdoor lighting  
 Motors and controls  
 Solar panels







**Flexible Metal Pre-Assembled Whips**

Used for lighting fixture installations as well as many other electrical equipment uses. These metallic whips consist of UL listed flexible metal conduit Type BR, stranded (stock) or solid THHN wire with 6" leads, and internal, zinc die-cast fittings with steel locknuts.

Construction:

Hot Dipped Galvanized Steel  
Helically wound, formed strip  
Reduced Wall Steel Gauge

Part No	Size (Inch)	Length (Inch)	Wire Gauge & Configuration	
MW10122	3/8"	72"	12/2	BLK-WT
MW10123	3/8"	72"	12/3	BLK-WT-GRN
MW10142	3/8"	72"	14/2	BLK-WT
MW10143	3/8"	72"	14/3	BLK-WT-GRN
MW10144	3/8"	72"	14/4	BLK-WT-RED
MW10182	3/8"	72"	18/2	BLK-WT
MW10183	3/8"	72"	18/3	BLK-WT-GRN



**Grounding pigtails**



Green insulated #14 AWG solid wire  
#10-32 x 3/8 green grounding screw on one end  
The other end contains a fork terminal  
Used to ground devices to steel boxes

**Specification**

Part No	Length	Wire AWG	Wire	Screw
S12-60	6 inch	#12	solid	#10-32 x 3/8
S12-65	6.5 inch	#12	solid	#10-32 x 3/8
S12-70	7 inch	#12	solid	#10-32 x 3/8
S12-75	7.5 inch	#12	solid	#10-32 x 3/8
S12-80	8 inch	#12	solid	#10-32 x 3/8
N12-70	7 inch	#12	stranded	#10-32 x 3/8
N12-75	7.5 inch	#12	stranded	#10-32 x 3/8
N12-80	8 inch	#12	stranded	#10-32 x 3/8
S14-60	6 inch	#14	solid	#10-32 x 3/8
S14-65	6.5 inch	#14	solid	#10-32 x 3/8
S14-70	7 inch	#14	solid	#10-32 x 3/8
S14-75	7.5 inch	#14	solid	#10-32 x 3/8
S14-80	8 inch	#14	solid	#10-32 x 3/8
N14-70	7 inch	#14	stranded	#10-32 x 3/8
N14-75	7.5 inch	#14	stranded	#10-32 x 3/8
N14-80	8 inch	#14	stranded	#10-32 x 3/8

## Weatherproof Box

## Weatherproof box cover



**Use:**

Includes plugs, ground screw and mounting hardware.

**Materials :**Aluminum Die-Cast

**Standards :**

UL 514A, CSA C22.2 No. 18.1-04

**Certification:**UL/CUL

### One Gang Weatherproof Outlet Box

Part No.	Hole size	Box depth
FSB50-3	1/2"	2"
FSB75-3	3/4"	2"
FSB50-4	1/2"	2"
FSB75-4	3/4"	2"
FSB50-5	1/2"	2"
FSB75-5	1/2"	2"
FSB50-5X	3/4"	2"
FSB75-5X	3/4"	2"
FSB100-3	1"	2"



**Use:**

Includes plugs, ground screw and mounting hardware.

**Materials :**Aluminum Die-Cast

**Standards :**UL 514A

CSA C22.2 No. 18.1-04

**Certification:**UL/CUL

### Two Gang Weatherproof Outlet Box

Part No.	Hole size	Box depth
TGB50-3	1/2"	2-3/16"
TGB75-3	3/4"	2-3/16"
TGB50-4	4X1/2"	2-3/16"
TGB75-4	4X3/4"	2-3/16"
TGB50-5	5X1/2"	2-3/16"
TGB75-5	5X3/4"	2-3/16"
TGB50-5X	5X1/2"	2-3/16"
TGB75-5X	5X3/4"	2-3/16"
TGB50-7	7X1/2"	2-3/16"
TGB75-7	7X3/4"	2-3/16"
TGB50-7X	7X1/2"	2-3/16"
TGB75-7X	7X3/4"	2-3/16"
TGB50-9	9X1/2"	2-3/16"
TGB75-9	9X3/4"	2-3/16"



**Use:**

Includes plugs, ground screw and mounting hardware.

**Materials :**Aluminum Die-Cast

**Standards :**UL 514A

CSA C22.2 No. 18.1-04

**Certification:**UL/CUL

### Weatherproof Boxes Double Gang--4" Round Box

Part No.	Size
RGB-50	1/2"
RGB-75	3/4"



**Use:**

Includes plugs, ground screw and mounting hardware.

**Materials :**Aluminum Die-Cast

**Standards :**UL 514A

CSA C22.2 No. 18.1-04

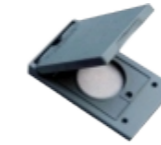
**Certification:**UL/CUL

### Weatherproof Boxes Double Gang--4" Round Extension

Part No.	Size
RGE-50	1/2"
RGE-75	3/4"



SBC-2



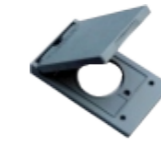
SPO-50



GFV-2



SBC-4



SPO-60



EXR-50  
EXR-75



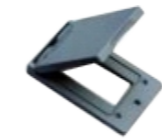
DBC-4



SPO-70



EXT50-4  
EXT75-4



GFV-1



DDV-2



EXT50-6  
EXT75-6



GFH-1



DSV-2



RBC-4



SDV-1



DSD-2



RC-1



SSV-1



DGF-2



RC-2



SDH-2



SGF-2



RC-3



**AC DISCONNECT**

ACD is a disconnect located between loadcenter - (distribution panel) and air conditioner

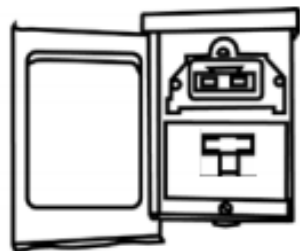
Provides installer or repairman with a visible - disconnection means

Easy to install

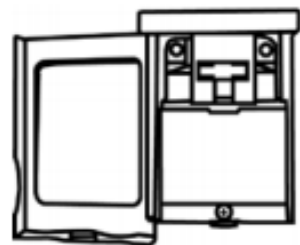
Non-fused pull out type 60 amp rating

Galvanized steel housing

240 Volt



CAT #	SIZE	voltage	CASE	CASE
ACD48	60 AMP SWITCHABLE	120/240	6	20
ACD49	60 AMP NON-FUSED PULLOUT	120/240	6	20
ACD50	30 AMP FUSED	120/240	6	20
ACD51	60 AMP FUSED	120/240	6	20
ACD52	60 AMP NON-FUSED PULLOUT	120/240	6	30
	W/15 AMP GFCI RECP.	120/240	6	30
ACD53	60 AMP SWITCHABLE	120/240	6	30
	W/15 AMP GFCI RECP.	120/240	6	30



WIRE RANGE DATA: LUG TIGHTENING TORQUE (lb-in)

CONNECTORS	COPPER		SCREW TYPE	WIRE SIZE	TORQUE
	SOL	STR.			
LINE	14-10	14-3	SLOTTED	8	36-40
LOAD	14-10	14-3		6-4	41-35
EQUIP.GRD.	12-10	12-4		3-2	45-50



Steel handy junction box



Part No.	Specification	Thickness
SF-58361-50	4 x 2 x 1-7/8", KO Sides (8) - 1/2" KO Bottom (3) - 1/2"	1.0mm 1.2mm 1.5mm 1.6mm



Part No.	Specification	Thickness
SF-58361-50COM	4 x 2 x 1-7/8", KO Sides (4) - 1/2", (4) - MKO KO Bottom (2) - 1/2", (1) - MKO	1.0mm 1.2mm 1.5mm 1.6mm



Part No.	Specification	Thickness
SF-58361P-75	4 x 2 x 1-7/8", KO Sides (6) - 3/4" KO Bottom (1) - 3/4" with raised ground emboss & 10/32 ground screw	1.0mm 1.2mm 1.5mm 1.6mm



Part No.	Specification	Thickness
SF-58361-75	4 x 2 x 1-7/8", KO Sides (4) - 1/2", (4) - MKO KO Bottom (2) - 1/2", (1) - MKO	1.0mm 1.2mm 1.5mm 1.6mm



Part No.	Specification	Thickness
SF-58361-VB-50COM	4 x 2 x 1-7/8" , WITH MKO & FB BRACKET, KO Sides (2) - 1/2", (3) - MKO KO Bottom (2) - 1/2", (1) - MKO	1.0mm 1.2mm 1.5mm 1.6mm



## Steel Junction Box



### Steel octagonal junction box



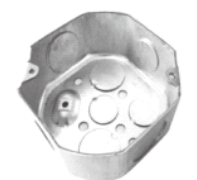
Part No.	Specification	Thickness
SF-54151-50	4 x 4 x 1-1/2" Drawn Octagonal Steel box, KO Sides (4) - 1/2" KO Bottom (5) - 1/2"	1.0mm 1.2mm 1.5mm 1.6mm



Part No.	Specification	Thickness
SF-54151-75	4 x 4 x 1-1/2" Drawn Octagonal Steel box, KO Sides (4) - 3/4" KO Bottom (3) - 1/2", (2) - 3/4"	1.0mm 1.2mm 1.5mm 1.6mm



Part No.	Specification	Thickness
SF-54151-F	4 x 4 x 1-1/2", with FB Bracket for offset mounting on flat side of stud or joist KO Sides (3) - 1/2" KO Bottom (5) - 1/2"	1.0mm 1.2mm 1.5mm 1.6mm



Part No.	Specification	Thickness
SF-54151P-5075	4 x 4 x 1-1/2" Drawn Octagonal Steel box, Knockouts (2) - 1/2" & (2) - 3/4" KO Bottom (2) - 1/2" & (2) - 3/4" with Raised Ground Emboss & 10/32 Ground Screw	1.0mm 1.2mm 1.5mm 1.6mm



Part No.	Specification	Thickness
SF-54171-75	4 x 4 x 2-1/8" KO Sides (4) - 3/4" KO Bottom (3) - 1/2", (2) - 3/4"	1.0mm 1.2mm 1.5mm 1.6mm

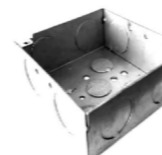
## Steel Junction Box



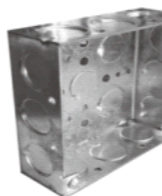
### Steel square junction box



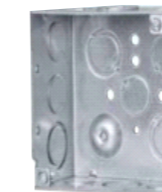
Part No.	Specification	Thickness
SF-52151P-5075	4 x 4 x 1-1/2", KO Sides: (8) - 1/2", (4) - 3/4"; KO Bottom: (2) - 1/2", (2) - 3/4" with Raised Ground Emboss	1.0mm 1.2mm 1.5mm 1.6mm



Part No.	Specification	Thickness
SF-52151-75	4 x 4 x 1-1/2". KO Sides: (8) - 3/4" KO Bottom: (3) - 1/2", (2) - 3/4"	1.0mm 1.2mm 1.5mm 1.6mm



Part No.	Specification	Thickness
SF-52151-50	4 x 4 x 1-1/2" KO Sides (12) - 1/2" KO Bottom (5) - 1/2"	1.0mm 1.2mm 1.5mm 1.6mm



Part No.	Specification	Thickness
SF-52171P-50COM	4 x 4 x 2-1/8" KO Sides: 8*1/2", 4*MKO; KO Bottom: 2*1/2", 2*MKO; with raised groudng screw	1.0mm 1.2mm 1.5mm 1.6mm



Part No.	Specification	Thickness
SF-52171P-100	4 x 4 x 2-1/8", KO side: 8*1" KO bottom: 2*1/2", 2*3/4", with raised groudng screw	1.0mm 1.2mm 1.5mm 1.6mm

## Steel Junction Box



### Steel square junction box



Part No.	Specification	Thickness
SF-52171P-75	4 x 4 x 2-1/8", KO side: 8*3/4" KO bottom: 2*1/2", 2*3/4", with raised groudng screw	1.0mm 1.2mm 1.5mm 1.6mm



Part No.	Specification	Thickness
SF-52151-FS	4 x 4 x 1-1/2", with FB Bracket for offset mounting on flat side KO Sides (6) - 1/2", (3) - MKO KO Bottom (3) - 1/2", (2) - MKO	1.0mm 1.2mm 1.5mm 1.6mm



Part No.	Specification	Thickness
SF-52171P-FS	4 x 4 x 2-1/8", with FB Bracket for offset mounting on flat side of stud or joist Bracket FB, KO Sides (6) - 1/2" 3-MKO KO Bottom (2) - 1/2", (2) -MKO with Raised Ground Emboss	1.0mm 1.2mm 1.5mm 1.6mm



Part No.	Specification	Thickness
SF-72171-K	Steel Square Outlet Box 4-11/ 16 x 2-1/8 Number of Knockouts: 22 Knockout Size: (4) 1/2 INCH, (2) 3/4 INCH CONCENTRIC KNOCKOUT BOTTOM, (10) 1/2 INCH, (6) 3/4 INCH CONCENTRIC KNOCKOUT SIDE	1.0mm 1.2mm 1.5mm 1.6mm

## Steel Junction Box



### Steel square junction box



Part No.	Specification	Thickness
SF-52171-KSSX	Steel Square Outlet Box 4 x 2-1/8 Number of Knockouts: 16Knockout Size: (4) 1/2 INCH, (2) 3/4 INCH CONCENTRIC KNOCKOUT BOTTOM, (7) 1/2 INCH, (3) 3/4 INCH CONCENTRIC KNOCKOUT SIDE	1.0mm 1.2mm 1.5mm 1.6mm



Part No.	Specification	Thickness
SF-52151-75	4 x 4 x 1-1/2". KO Sides: (8) - 3/4" KO Bottom: (3) - 1/2", (2) - 3/4"	1.0mm 1.2mm 1.5mm 1.6mm



Part No.	Specification	Thickness
SF-52171P-50	4" Square Box, Welded, Metallic, 2-1/8" Deep Number: 16 (Bottom -4, Side -12) Size : 1/2 Inch Bottom, 1/2 Inch Sides	1.0mm 1.2mm 1.5mm 1.6mm



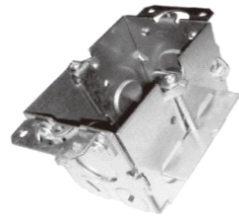
Part No.	Specification	Thickness
SF-52171P	Square Outlet Box, (2)1/2", (2) 1/2", (1) 3/4" E, 4", Conduit (no clamps), Welded, 2-1/8", Steel, (8) 1/2", (4) 1/2", (1) 3/4" E, 30.3 cubic inch capacity Number of Knockouts- 16 Knockout Size: 1/2 in (Bottom);3/4 in (Eccentric Bottom); 1/2 in (Side);3/4 in (Eccentric Side)	1.0mm 1.2mm 1.5mm 1.6mm



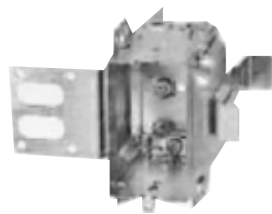
Part No.	Specification	Thickness
SF-52151P	Square Outlet Box, (2) 1/2", (2) 1/2", (1) 3/4" E, 4", Conduit (no clamps), Welded, 1-1/2", Steel, (8) 1/2", (4) 1/2", (1) 3/4" E, 22.0 cubic inch capacity Number of Knockouts- 16Knockout Size - 1/2 in (Bottom) 1/2 - 3/4 in (Moon Knockout Bottom) 1/2 in (Side)	1.0mm 1.2mm 1.5mm 1.6mm



Steel Multiple Gang Box



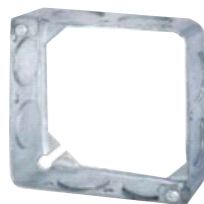
Part No.	Specification	Thickness
SF-1104-50	2 X 3 X 2-1/2" DEEP, GANGABLE 1-GANG OLD WORK TIGERGRIP BOX, KO Sides (4) - 1/2" KO Ends (2) - 1/2" KO Bottom (1) - 1/2"	1.0mm 1.2mm 1.5mm 1.6mm



Part No.	Specification	Thickness
SF-3104-LSSAX	Gangable, Steel, 2-1/2 in. Depth Number of Knockouts: 4	1.0mm 1.2mm 1.5mm 1.6mm



Steel extension ring



Part No.	Specification	Thickness
SF-53151-75	4 x 4 x 1-1/2" KO side: 8*3/4"	1.0mm 1.2mm 1.5mm 1.6mm



**10GA & 12GA**  
**Material:**  
stainless steel & galvanized steel

Single Jack Chain

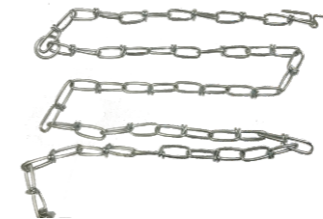
Part No.	Size
JC-50	50"
JC-100	100"
JC-1000	1000"



**Material:**  
stainless steel & galvanized steel

Standard Chain 3/8"

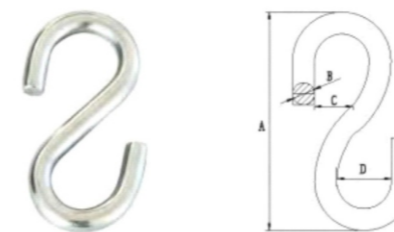
PART NO.	SIZE
LC-50	50"



**12GA Fixture Chain**  
**Material:**  
stainless steel & galvanized steel

Fixture Chain

Part No.	Size
FC-300	300"



Used to attach cable or chain to equipment.  
**Material:**  
stainless steel & galvanized steel

S hook

Part No.	Specification (Inch)			
	A	B	C	D
HK-01	1.37"	1/8"	0.18"	0.43"
HK-02	1.56"	5/32"	0.18"	0.50"
HK-03	1.81"	3/16"	0.31"	0.62"
HK-04	2.06"	1/4"	0.31"	0.68"
HK-05	2.5"	5/16"	0.5"	0.75"





Steel Safety Plate

**Use:**  
Safety plates are used to protect cable insulation from nail punctures in wooden structures.

Specification		Weight
1-1/2*3"	16 Gauge	31.75 g
2*5"	16 Gauge	77.11 g
3*1-1/2"	16 Gauge	36.29 g
3*1-1/2"	16 Gauge	68.04 g
12*1-1/2"	14 Gauge	131.54 g
18*1-1/2"	14 Gauge	213.19 g
2-1/2*1-1/2"	16 Gauge	27.22 g



**Use:**  
Nail straps are used to secure steel EMT Conduit to wooden structure members. Can be used in place of one or two hole straps.

**Materials :**  
Stamped Steel  
**Finish :**  
Zinc Plated

Nail Straps

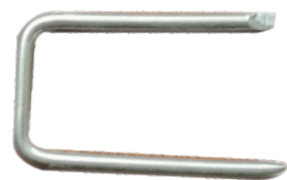
Part No.	Size
DS1	1/2"
DS2	3/4"
DS3	1"



**Use:**  
used to secure Nonmetallic Sheathed and Underground Feeder Cables to wooden Structures.

Plastic Cable Staples

Part No.	Size
PS1	1/2"
PS2	3/4"
PS3	1"



Steel Cable Staples

Part No.	Size
MS5010	1/2"X 1"
MS1216	11/4"X9/16"
MS1005	13/16"X9/16"



Blue Steel Insulated Staples

**Material:**  
Steel  
**Finish:**  
Blue insulated

Part No.	Size
BLS50	1/2"
BLS916	9X16"
BLS1050	1"X1/2"
BLS1150	11/2"X 1/2"



**Material:**  
Malleable iron / aluminum / steel

EMT bender

Part No.			Size
MEB50	AEB50	SEB50	1/2"
MEB75	AEB75	SEB75	3/4"
MEB100	AEB100	SEB100	1"



**Material:**  
Aluminum

Aluminum Lug

Part No.	Size
AG12	AWG#14-4
AG10	AWG#1/0-14



**Materials :**  
Malleabl iron  
**Finish :**  
Zinc Plated

Countersunk Plug

Part No.	Size
MCG50	1/2"
MCG75	3/4"
MCG100	1"
MCG125	1-1/4"
MCG150	1-1/2"
MCG200	2"



SF-B15-2USB  
USB 15A receptacle



SF-B20-2USB  
USB 20A receptacle



SF-B15TR-2USB  
TR USB15A receptacle



SF-B20TR-2USB  
TR USB20A receptacle

**Meet the standrad:**

- UL498CSA-C22.2 NO.42 USB1.0/2.0/3.0
- Housing material flame retardant grades UL94-V2

**Specifications, Electrical performance, Amboent temperature:**

- Rated working current:15A / 20A
- Rated working voltage:125V
- Power frequency:60Hz
- USB Voltage and current:5VDC 4A / 2.1A
- Wire specifications:#14-@10AWG
- USB Compatible products:USB1.0/2.0/3.0 Includes Apple products
- Electric strength:Pressure resistance 1500V 50Hz Duration 1 Min
- Working temperature:-20°C~60°C
- Insulation resistance: > 50MΩ (DC500V)



SF-045  
(clip wiring)



SF-048  
(Screw wiring)



SF-047  
(clip wiring)



SF-050  
(clip wiring)

**Meet the standrad:**

- UL20
- Shell material flame retardant grade UL94-V0

**Specifications, Electrical performance, Amboent temperature:**

- Rated working current:15A Max
- Rated working voltage:120Vac
- Power frequency:60Hz
- Electric strength:Pressure resistance 1500V 50Hz Duration 1 Min
- Working temperature:-30OC~70OC
- Insulation resistance: > 10MΩ (DC500V)



SF-B15  
GFCI 15A 1 LIGHT



SF-B15WR  
GFCI 15A 1 LIGHT



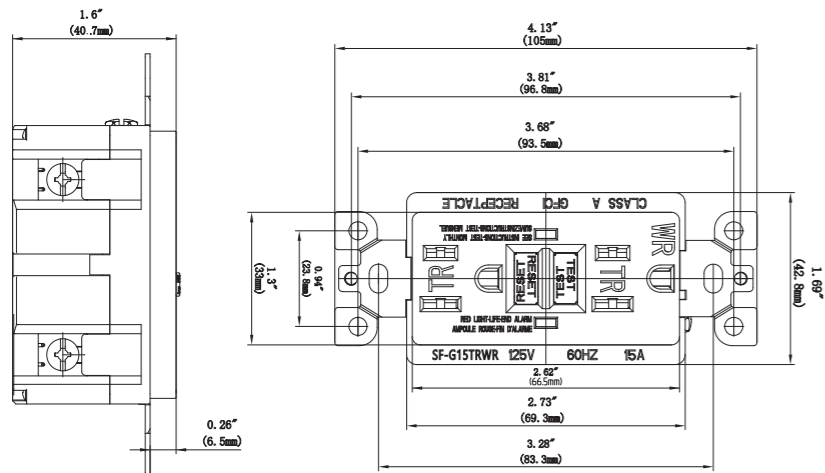
SF-B15TR  
GFCI 15A 1 LIGHT



SF-B15TRWR  
GFCI 15A 1 LIGHT

Specifications, Electrical performance, Ambient temperature:

- Rated working current: 15A / 20A
- Rated working voltage: 125V
- Power frequency: 60Hz
- Tripping threshold: 5mA Tripping time < 25ms
- Surge current: 6000V / 3000A 6000V / 10KA
- Electric strength: Pressure resistance 1500V 50Hz Duration 1 Min
- Working temperature: -35°C ~ 66°C
- Insulation resistance: > 50MΩ (DC500V)
- Short-circuit current: 10KA



Meet the standard:

- UL498CSA-C22.2 NO.42
- Housing material flame retardant grades UL94-V2



SF-G15  
GFCI 15A 2 LIGHTS



SF-G15WR  
GFCI 15A 2 LIGHTS



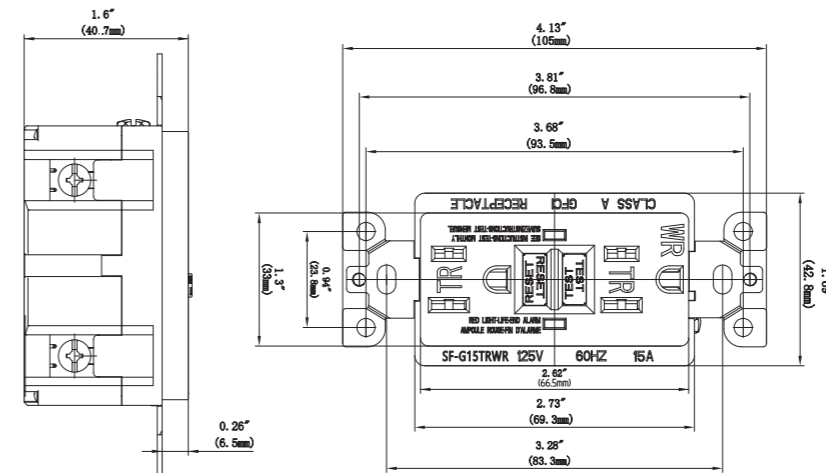
SF-G15TR  
GFCI 15A 2 LIGHTS



SF-G15TRWR  
GFCI 15A 2 LIGHTS

Specifications, Electrical performance, Ambient temperature:

- Rated working current: 15A / 20A
- Rated working voltage: 125V
- Power frequency: 60Hz
- Tripping threshold: 5mA Tripping time < 25ms
- Surge current: 6000V / 3000A 6000V / 10KA
- Electric strength: Pressure resistance 1500V 50Hz Duration 1 Min
- Working temperature: -35°C ~ 66°C
- Insulation resistance: > 50MΩ (DC500V)
- Short-circuit current: 10KA



Meet the standard:

- UL498CSA-C22.2 NO.42
- Housing material flame retardant grades UL94-V2





SF-B20  
GFCI 20A 1 LIGHT TR



SF-B20WR  
GFCI 20A 1 LIGHT



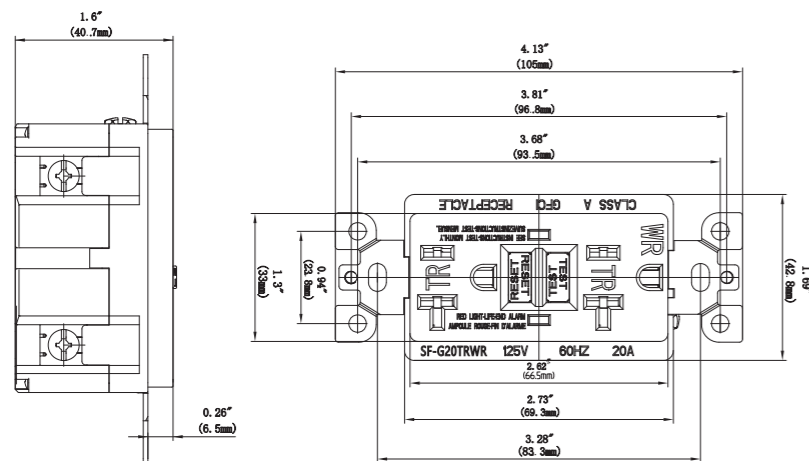
SF-B20TR  
GFCI 20A 1 LIGHT TR



SF-B20TRWR  
GFCI 20A 1 LIGHT TR

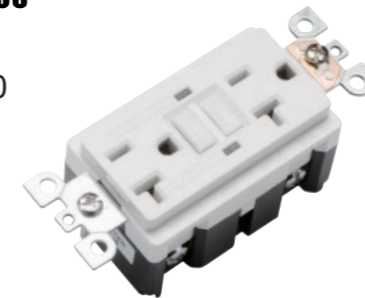
Specifications, Electrical performance, Ambient temperature:

- Rated working current: 15A / 20A
- Rated working voltage: 125V
- Power frequency: 60Hz
- Tripping threshold: 5mA Tripping time < 25ms
- Surge current: 6000V / 3000A 6000V / 10KA
- Electric strength: Pressure resistance 1500V 50Hz Duration 1 Min
- Working temperature: -35°C ~ 66°C
- Insulation resistance: > 50MΩ (DC500V)
- Short-circuit current: 10KA

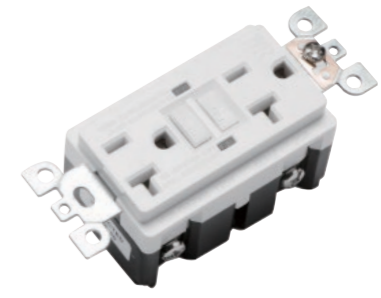


Meet the standard:

- UL498CSA-C22.2 NO.42
- Housing material flame retardant grades UL94-V2



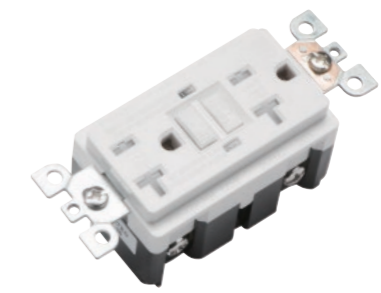
SF-G20  
GFCI 20A 2 LIGHTS



SF-G20WR  
GFCI 20A 2 LIGHTS



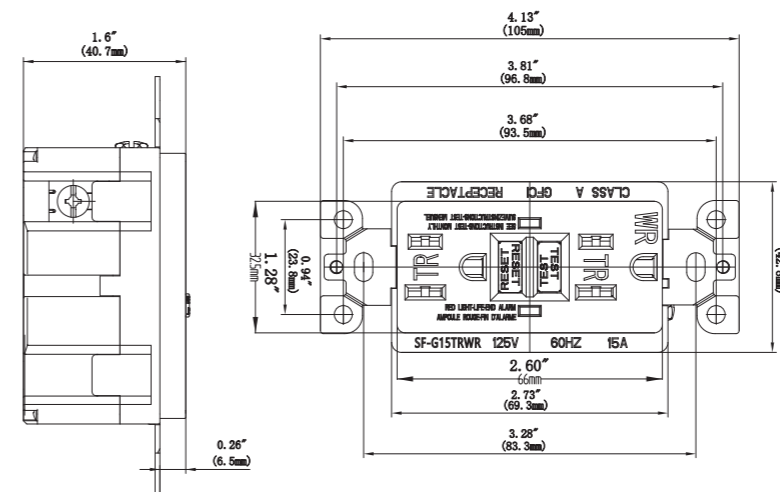
SF-G20TR  
GFCI 20A 2 LIGHTS



SF-G20TRWR  
GFCI 20A 2 LIGHTS

Specifications, Electrical performance, Ambient temperature:

- Rated working current: 15A / 20A
- Rated working voltage: 125V
- Power frequency: 60Hz
- Tripping threshold: 5mA Tripping time < 25ms
- Surge current: 6000V / 3000A 6000V / 10KA
- Electric strength: Pressure resistance 1500V 50Hz Duration 1 Min
- Working temperature: -35°C ~ 66°C
- Insulation resistance: > 50MΩ (DC500V)
- Short-circuit current: 10KA



Meet the standard:

- UL498CSA-C22.2 NO.42
- Housing material flame retardant grades UL94-V2



EXIT-Green Color

Plastic Green Frame "Glo Bright" Zero Energy Exit Sign  
 With A One Side 50 ft. Viewing Distance.  
 Std Packaging :1  
 Frame Color:Green  
 Material:Plastic  
 Viewing:1 Side  
 Viewing Distance:50 ft



SUP006-400W

Aluminum  
 E39 Lampholder  
 250-400W(HPS)- CWA:120/208/240/277V  
 250-400W(MH) -CWA:120/208/240/277V  
 Powder Coated Finishes:  
 ABZ: Architectural Bronze  
 C: Custom  
 Option: Stainless steel wire guard .



Vaportight Light-SUP020

Aluminum  
 Die-Cast Aluminum with Die-Cast Guard, ½ NPS Hub Size  
 PL100W/Filament lamp 100w



SUP-045

1.Flood lighting  
 2.Material:Die-casting Aluminum A380(body)  
 3.E27 Lampholder



SUP-004/250W

Aluminum  
 E39 Lampholder  
 250W(HPS)- CWA:120/208/240/277V  
 250W(MH) -CWA:120/208/240/277V  
 Powder Coated Finishes:  
 ABZ: Architectural Bronze  
 C: Custom



SUP-042

1.Flood lighting  
 2.Material:Die-casting Aluminum A380(body)  
 3.E27 Lampholder  
 4.IP Rating:IP65